

MODELS B & FCB

BELT DRIVEN UTILITY VENT SETS



MODEL FEATURES

- Exhaust air to over 32,000 CFM with static pressure capabilities up to 8.5" w.g.
- Belt drives permit easy performance adjustments when needed
- Backward inclined or forward curved type wheels
- Airtight all welded construction
- Rotatable to 8 discharge orientations
- AMCA Seal for Air Performance
- cULus 705 and 762 Listings available

MODEL OPTIONS

MODEL NAME	TYPICAL APPLICATIONS	
B	Backward Inclined wheels	page 33
FCB	Forward Curved Wheel	page 49

MODEL OVERVIEW

ULTRAFAN-PAK fan wheels are the versatile, quiet, energy efficient backward inclined and forward curved type. Models B (backward inclined) and FCB (forward curved) utility sets are the best selection for many industrial, commercial and institutional projects. Typical applications include hood exhaust, welding fume exhaust and flammable gas exhaust. Ventilation of theaters, restaurants, stores, hotels, kitchens, gymnasiums, laundry rooms, lavatories and locker rooms are other common applications for utility sets.

ULTRAFAN-PAK fans by S&P are available in 13 sizes with wheel diameters from 7-3/4" through 36-1/2". Wheel diameters are readily recognized from the model number. For example Model B 10 has a 10-1/2" diameter wheel and Model B 330 has a 33" diameter wheel. ULTRAFAN-PAK Class I fans deliver up to 26,000 cubic feet of air per minute (CFM) at static pressures (SP) up to 5" W.G. Class II fans deliver up to 32,000 CFM at SP up to 8.5" W.G.

For small or medium size general ventilation applications ULTRAFAN-PAK utility sets are the ideal choice. These easy to select, easy to install fans come prepackaged from the factory. Each self-contained unit includes the motor and adjustable drive as well as the fan assembly.

1 year fan housing warranty, 1 year motor warranty



CONSTRUCTION/SPECIFICATIONS

Wheels

Flat Blade Wheel—backwardly inclined non-overloading wheels standard on sizes 105 thru 245.

Airfoil Wheel—backward curved airfoil wheels standard on sizes 270 thru 365. All wheels are statically and dynamically balanced.

Inlet

Circular stamped ring. Rigid streamlined inlet.

Frame

All welded steel construction. Easy access to motor for servicing.

Housing

All are convertible and may be rotated easily to any of eight 45° positions.

Motor Base

Heavy construction assures sturdy base for motor mounting and features easy adjustment for belt tension.

Bearings

Self-aligning ball bearing pillow blocks. These bearings are designed to operate under the most severe atmospheric conditions.

Shaft

Ground and polished solid steel key-wayed on each end.

Motor

Commercial standard Fan and Blower duty motors are job-matched to each requirement. All types of current characteristics, enclosures and bearing construction are available. Adjustable V-Belt Drive High quality CAST Iron adjustable pitch motor sheaves are standard equipment. V-Belts with ample service factor are also employed. When performance data is specified, the blowers are factory set to exact blower speed to meet job requirements. Constant speed drives are also available.

Material Specifications Class 1 & 2

FAN SIZE	WHEEL DIAMETER	SHAFT DIAMETER		HOUSING GAUGES		NO. OF BLADES	WHEEL GAUGES				FRAME GAUGES	
		CLASS 1	CLASS 2	BAND	FACE		BLADES				DRIVE	INLET
							BACK PLATE	CLASS 1	CLASS 2	END RING		
105	10 ^{1/2}	3/4	1	20	16	12	10	12	10	14	16	—
122	12 ^{1/4}	1	1 ^{3/16}	16	16	12	3/16	12	3/16	14	14	16
135	13 ^{1/2}	1	1 ^{3/16}	16	14	12	3/16	12	3/16	14	14	16
150	15	1	1 ^{3/16}	16	14	12	3/16	12	3/16	14	14	16
165	16 ^{1/2}	1	1 ^{3/16}	16	14	12	3/16	10	3/16	14	14	16
182	18 ^{1/4}	13/16	1 ^{7/16}	16	14	12	3/16	10	3/16	14	14	14
200	20	13/16	1 ^{7/16}	14	14	12	3/16	3/16	3/16	14	12	14
222	22 ^{1/4}	13/16	1 ^{11/16}	14	12	12	3/16	3/16	10	14	12	14
245	24 ^{1/2}	17/16	1 ^{11/16}	14	12	12	3/16	3/16	10	14	12	12
270	27	17/16	1 ^{11/16}	14	12	11	3/16	16	16	14	12	12
300	30	1 ^{11/16}	1 ^{11/16}	14	12	11	3/16	16	16	14	12	12
330	33	1 ^{11/16}	1 ^{11/16}	14	12	11	1/4	16	16	14	10	10
365	36 ^{1/2}	1 ^{11/16}	2 ^{3/16}	12	10	11	1/4	16	16	14	10	10



Performance Characteristics

B-105

TIP SPEED (FPM) = 2.749 x RPM OUTLET { .636 Sq. Ft. Inside
113/4" x 8" Outside

MAX. HP = .0387 $\left(\frac{\text{RPM}}{1000}\right)^3$

WHEEL DIAMETER—101/2" INLET { .894 Sq. Ft. Inside
127/8" Dia. Outside

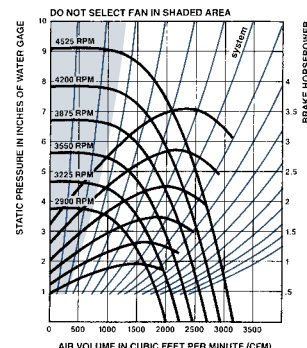
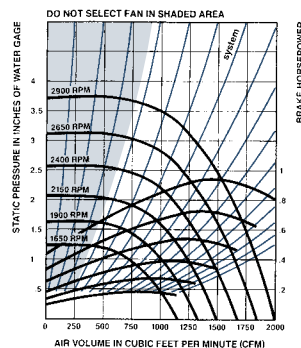
MAX. RPM
CL.1 3623
CL.2 4724

VOL. CFM	OUT-LET VEL. FPM	.25 S.P.		.5 S.P.		.75 S.P.		1 S.P.		1.25 S.P.		1.5 S.P.		2 S.P.		2.5 S.P.		3 S.P.		3.5 S.P.	
		RPM	BHP	RPM	BHP	RPM	BHP	RPM	BHP	RPM	BHP	RPM	BHP	RPM	BHP	RPM	BHP	RPM	BHP	RPM	BHP
509	800	965	0.03	1177	0.06	1369	0.09	1545	0.13	1709	0.16	—	—	—	—	—	—	—	—	—	—
572	900	1034	0.04	1227	0.07	1407	0.10	1574	0.14	1729	0.18	1876	0.22	—	—	—	—	—	—	—	—
363	1000	1106	0.05	1283	0.08	1451	0.11	1609	0.15	1757	0.19	1898	0.23	2159	0.33	—	—	—	—	—	—
700	1100	1183	0.06	1345	0.09	1502	0.13	1651	0.17	1792	0.21	1926	0.25	2178	0.35	2412	0.46	—	—	—	—
763	1200	1261	0.07	1411	0.11	1557	0.14	1698	0.18	1832	0.23	1961	0.27	2204	0.37	2429	0.48	2641	0.60	—	—
827	1300	1342	0.09	1481	0.12	1618	0.16	1750	0.20	1878	0.25	2001	0.29	2234	0.40	2452	0.51	2658	0.62	2853	0.75
890	1400	1425	0.10	1554	0.14	1682	0.18	1807	0.23	1928	0.27	2046	0.32	2270	0.42	2481	0.54	2680	0.66	2870	0.79
954	1500	1509	0.12	1629	0.16	1749	0.20	1867	0.25	1982	0.30	2095	0.35	2310	0.45	2514	0.57	2707	0.69	2892	0.82
1018	1600	1594	0.14	1707	0.18	1820	0.23	1931	0.28	2040	0.33	2148	0.38	2354	0.49	2551	0.60	2739	0.73	2919	0.86
1081	1700	1681	0.17	1786	0.21	1892	0.25	1998	0.30	2102	0.36	2204	0.41	2403	0.52	2593	0.64	2774	0.77	2949	0.91
1145	1800	1768	0.19	1867	0.23	1967	0.28	2067	0.34	2166	0.39	2264	0.45	2454	0.56	2637	0.68	2814	0.82	2983	0.95
1208	1900	1865	0.22	1949	0.27	2044	0.32	2139	0.37	2233	0.43	2326	0.48	2509	0.60	2686	0.73	2857	0.86	3021	1.00
1272	2000	1945	0.25	2032	0.30	2122	0.35	2213	0.41	2302	0.46	2391	0.52	2567	0.65	2737	0.78	2903	0.91	3063	1.06
1336	2100	2033	0.29	2116	0.34	2202	0.39	2288	0.45	2374	0.51	2459	0.57	2627	0.70	2792	0.83	2952	0.97	3107	1.12
1399	2200	2121	0.33	2201	0.38	2283	0.43	2365	0.49	2447	0.55	2529	0.61	2690	0.75	2849	0.89	3003	1.03	3154	1.18
1463	2300	2210	0.37	2287	0.42	2365	0.47	2443	0.53	2522	0.60	2600	0.66	2755	0.80	2908	0.94	3058	1.09	3204	1.24
1526	2400	2298	0.41	2373	0.47	2447	0.52	2523	0.58	2598	0.65	2673	0.72	2822	0.86	2970	1.01	3115	1.16	3257	1.31
1654	2600	2475	0.51	2548	0.57	2615	0.63	2685	0.70	2754	0.76	2824	0.84	2962	0.98	3099	1.14	3235	1.30	3369	1.46
1781	2800	2655	0.63	2725	0.70	2786	0.76	2850	0.82	2915	0.90	2979	0.97	3108	1.13	3236	1.29	3363	1.46	3489	1.63
1908	3000	2841	0.77	2902	0.84	2960	0.90	3018	0.97	3078	1.05	3138	1.12	3259	1.28	3379	1.46	3498	1.63	3617	1.81
2035	3200	3027	0.93	3078	0.99	3135	1.07	3189	1.14	3244	1.21	3301	1.29	3414	1.46	3527	1.64	3639	1.82	3751	2.01
2162	3400	3200	1.09	3255	1.17	3311	1.25	3362	1.32	3413	1.40	3466	1.49	3573	1.66	3679	1.84	3785	2.04	3890	2.23

VOL. CFM	OUT-LET VEL. FPM	4 S.P.		4.5 S.P.		5 S.P.		5.5 S.P.		6 S.P.		6.5 S.P.		7 S.P.		7.5 S.P.		8 S.P.		8.5 S.P.	
		RPM	BHP	RPM	BHP	RPM	BHP	RPM	BHP	RPM	BHP	RPM	BHP	RPM	BHP	RPM	BHP	RPM	BHP	RPM	BHP
1208	1900	3181	1.15	3335	1.31	3485	1.47	3630	1.63	3772	1.81	3910	1.98	4045	2.17	4176	2.36	—	—	—	—
1272	2000	3218	1.21	3368	1.36	3515	1.53	3657	1.70	3796	1.87	3931	2.05	4063	2.24	4192	2.43	4319	2.63	4443	2.83
1336	2100	3258	1.27	3405	1.43	3548	1.59	3687	1.76	3823	1.94	3955	2.12	4085	2.31	4212	2.50	4336	2.70	4458	2.91
1399	2200	3301	1.33	3444	1.50	3584	1.66	3720	1.84	3853	2.01	3983	2.20	4110	2.39	4235	2.58	4357	2.78	4477	2.99
1463	2300	3347	1.40	3487	1.57	3623	1.74	3756	1.91	3886	2.09	4013	2.28	4138	2.47	4261	2.67	4380	2.87	4498	3.08
1526	2400	3396	1.47	3532	1.64	3665	1.81	3795	1.99	3922	2.18	4047	2.37	4169	2.56	4289	2.76	4407	2.96	4523	3.17
1654	2600	3500	1.63	3629	1.81	3756	1.98	3880	2.17	4002	2.36	4122	2.55	4239	2.75	4355	2.96	4468	3.16	4580	3.38
1781	2800	3613	1.81	3736	1.99	3856	2.17	3975	2.36	4091	2.56	4206	2.76	4319	2.96	4430	3.17	4540	3.39	4647	3.60
1908	3000	3734	2.00	3850	2.19	3965	2.38	4078	2.58	4189	2.78	4299	2.98	4408	3.19	4515	3.41	4620	3.63	4724	3.85
2035	3200	3862	2.21	3972	2.41	4081	2.61	4189	2.81	4295	3.02	4401	3.23	4505	3.45	4607	3.67	4709	3.89	—	—
2162	3400	3995	2.44	4100	2.64	4204	2.85	4306	3.06	4408	3.28	4509	3.50	4609	3.72	4708	3.95	—	—	—	—
2290	3600	4134	2.68	4234	2.90	4332	3.12	4430	3.34	4528	3.56	4624	3.79	4720	4.02	—	—	—	—	—	—
2417	3800	4278	2.95	4372	3.18	4466	3.40	4560	3.63	4653	3.87	—	—	—	—	—	—	—	—	—	—
2544	4000	4425	3.24	4515	3.48	4605	3.71	4694	3.95	—	—	—	—	—	—	—	—	—	—	—	—
2671	4200	4576	3.56	4662	3.80	—	—	—	—	—	—	—	—	—	—	—	—	—	—	—	—

Performance shown is for installation type B—Free inlet, Ducted outlet. Power rating (BHP) does not include drive losses. Performance ratings do not include the effects of appurtenances in the airstream. Data in bold face indicates quietest and most efficient performance.

- Class I Blowers
- Class II Blowers





MODEL B
BELT DRIVEN UTILITY VENT SET-BACKWARD INCLINED



Performance B-165

TIP SPEED (FPM) = 4.320 x RPM **OUTLET** { 1.560 Sq. Ft. Inside
173/4" x 13" Outside MAX. HP = .4142 $\left(\frac{\text{RPM}}{1000}\right)^3$

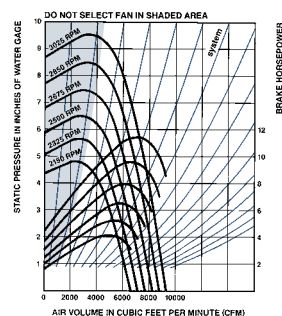
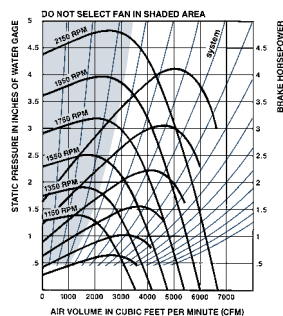
WHEEL DIAMETER—161/2" **INLET** { 1.67 Sq. Ft. Inside
177/8" Dia. Outside MAX. RPM
CL.1 2235
CL.2 2914

VOL. CFM	OUTLET VEL. FPM	.25 S.P.		.5 S.P.		.75 S.P.		1 S.P.		1.25 S.P.		1.5 S.P.		2 S.P.		2.5 S.P.		3 S.P.		3.5 S.P.	
		RPM	BHP	RPM	BHP	RPM	BHP	RPM	BHP	RPM	BHP	RPM	BHP	RPM	BHP	RPM	BHP	RPM	BHP	RPM	BHP
1248	800	573	0.08	719	0.14	—	—	—	—	—	—	—	—	—	—	—	—	—	—	—	—
1404	900	609	0.09	742	0.16	867	0.24	—	—	—	—	—	—	—	—	—	—	—	—	—	—
1560	1000	648	0.11	769	0.18	885	0.26	995	0.36	—	—	—	—	—	—	—	—	—	—	—	—
1716	1100	688	0.13	800	0.21	908	0.29	1011	0.38	1111	0.51	—	—	—	—	—	—	—	—	—	—
1872	1200	730	0.16	835	0.24	934	0.33	1031	0.42	1125	0.53	1216	0.67	—	—	—	—	—	—	—	—
2028	1300	773	0.18	871	0.27	965	0.37	1056	0.46	1144	0.56	1230	0.69	—	—	—	—	—	—	—	—
2184	1400	817	0.21	910	0.31	998	0.41	1083	0.51	1167	0.61	1248	0.73	1406	1.03	—	—	—	—	—	—
2340	1500	861	0.25	950	0.35	1033	0.45	1114	0.56	1193	0.67	1270	0.78	1420	1.06	—	—	—	—	—	—
2496	1600	906	0.28	992	0.40	1070	0.50	1146	0.62	1221	0.73	1295	0.85	1438	1.11	1576	1.45	—	—	—	—
2652	1700	952	0.32	1034	0.45	1109	0.56	1181	0.68	1252	0.80	1322	0.93	1459	1.18	1592	1.49	1720	1.88	—	—
2808	1800	999	0.37	1077	0.50	1149	0.62	1218	0.74	1286	0.87	1352	1.00	1483	1.27	1610	1.56	1734	1.92	—	—
2964	1900	1046	0.42	1120	0.56	1190	0.68	1256	0.81	1321	0.94	1384	1.08	1509	1.36	1631	1.65	1750	1.98	1866	2.40
3120	2000	1094	0.47	1164	0.62	1231	0.76	1295	0.89	1357	1.02	1418	1.17	1538	1.46	1655	1.75	1770	2.07	1882	2.46
3276	2100	1142	0.53	1208	0.69	1274	0.83	1335	0.97	1395	1.11	1453	1.26	1568	1.57	1681	1.87	1791	2.19	1900	2.54
3432	2200	1190	0.60	1253	0.76	1317	0.91	1376	1.06	1434	1.20	1490	1.35	1600	1.67	1709	2.00	1815	2.32	1920	2.66
3588	2300	1238	0.67	1299	0.83	1360	1.00	1418	1.16	1474	1.30	1528	1.46	1634	1.79	1738	2.13	1841	2.46	1942	2.80
3744	2400	1286	0.74	1345	0.91	1403	1.09	1460	1.26	1514	1.41	1567	1.57	1669	1.90	1770	2.26	1869	2.61	1967	2.96
4056	2600	1383	0.91	1438	1.10	1492	1.29	1546	1.48	1597	1.65	1647	1.82	1743	2.16	1837	2.54	1929	2.92	2021	3.30
4368	2800	1481	1.10	1533	1.31	1583	1.51	1633	1.72	1682	1.91	1730	2.10	1821	2.46	1909	2.84	1996	3.25	2081	3.67
4680	3000	1582	1.33	1629	1.55	1675	1.76	1722	1.98	1769	2.20	1814	2.41	1901	2.79	1984	3.19	2066	3.61	2147	4.05
4992	3200	1682	1.59	1726	1.81	1769	2.04	1812	2.27	1857	2.51	1900	2.74	1983	3.16	2063	3.58	2141	4.01	2217	4.46
5304	3400	1776	1.84	1822	2.11	1864	2.35	1904	2.59	1946	2.85	1987	3.10	2068	3.57	2144	4.01	2218	4.45	2291	4.91

VOL. CFM	OUTLET VEL. FPM	4 S.P.		4.5 S.P.		5 S.P.		5.5 S.P.		6 S.P.		6.5 S.P.		7 S.P.		7.5 S.P.		8 S.P.		8.5 S.P.	
		RPM	BHP	RPM	BHP	RPM	BHP	RPM	BHP	RPM	BHP	RPM	BHP	RPM	BHP	RPM	BHP	RPM	BHP	RPM	BHP
3276	2100	2005	2.97	2109	3.47	—	—	—	—	—	—	—	—	—	—	—	—	—	—	—	—
3432	2200	2022	3.06	2123	3.53	2221	4.06	—	—	—	—	—	—	—	—	—	—	—	—	—	—
3588	2300	2042	3.18	2139	3.61	2235	4.12	2329	4.67	—	—	—	—	—	—	—	—	—	—	—	—
3744	2400	2063	3.33	2158	3.73	2251	4.21	2342	4.74	2432	5.33	—	—	—	—	—	—	—	—	—	—
4056	2600	2111	3.68	2200	4.07	2288	4.49	2375	4.96	2461	5.49	2545	6.08	2628	6.72	—	—	—	—	—	—
4368	2800	2166	4.08	2250	4.48	2334	4.90	2416	5.33	2497	5.80	2577	6.33	2656	6.91	2735	7.54	2812	8.22	—	—
4680	3000	2227	4.50	2307	4.94	2385	5.37	2463	5.81	2540	6.26	2617	6.74	2692	7.26	2767	7.83	2841	8.45	2914	9.13
4992	3200	2293	4.93	2368	5.41	2443	5.88	2517	6.34	2590	6.81	2663	7.28	2735	7.77	2806	8.29	2877	8.85	—	—
5304	3400	2363	5.40	2434	5.90	2505	6.41	2575	6.91	2645	7.40	2714	7.90	2783	8.39	2851	8.90	—	—	—	—
5616	3600	2436	5.91	2504	6.43	2571	6.96	2638	7.49	2705	8.02	2771	8.55	2836	9.07	2901	9.59	—	—	—	—
5928	3800	2512	6.47	2577	7.00	2641	7.54	2705	8.10	2768	8.67	2831	9.23	2894	9.79	—	—	—	—	—	—
6240	4000	2591	7.09	2653	7.62	2714	8.18	2775	8.75	2836	9.34	2896	9.93	—	—	—	—	—	—	—	—
6552	4200	2671	7.75	2731	8.30	2790	8.87	2848	9.45	2907	10.05	—	—	—	—	—	—	—	—	—	—
6864	4400	2753	8.47	2811	9.04	2868	9.62	—	—	—	—	—	—	—	—	—	—	—	—	—	—
7176	4600	2836	9.24	2892	9.83	—	—	—	—	—	—	—	—	—	—	—	—	—	—	—	—

Performance shown is for installation type B—Free inlet, Ducted outlet. Power rating (BHP) does not include drive losses. Performance ratings do not include the effects of appurtenances in the airstream. Data in bold face indicates quietest and most efficient performance.

- Class I Blowers
- Class II Blowers





Performance B-182

TIP SPEED (FPM) = 4.778 x RPM **OUTLET** { 1.899 Sq. Ft. Inside
195/8" x 141/4" Outside MAX. HP = .6444 $\left(\frac{\text{RPM}}{1000}\right)^3$

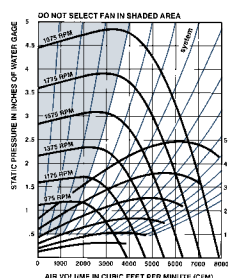
WHEEL DIAMETER—181/4" **INLET** { 2.02 Sq. Ft. Inside
195/8" Dia. Outside MAX. RPM
CL.1 2044
CL.2 2666

VOL. CFM	OUTLET VEL. FPM	.25 S.P.		.5 S.P.		.75 S.P.		1 S.P.		1.25 S.P.		1.5 S.P.		2 S.P.		2.5 S.P.		3 S.P.		3.5 S.P.	
		RPM	BHP	RPM	BHP	RPM	BHP	RPM	BHP	RPM	BHP	RPM	BHP	RPM	BHP	RPM	BHP	RPM	BHP	RPM	BHP
1519	800	527	0.09	658	0.17	—	—	—	—	—	—	—	—	—	—	—	—	—	—	—	—
1709	900	562	0.11	679	0.19	793	0.28	—	—	—	—	—	—	—	—	—	—	—	—	—	—
1899	1000	599	0.14	705	0.22	809	0.31	911	0.42	—	—	—	—	—	—	—	—	—	—	—	—
2089	1100	638	0.16	736	0.25	831	0.35	925	0.46	1016	0.59	—	—	—	—	—	—	—	—	—	—
2279	1200	677	0.19	769	0.29	857	0.39	944	0.50	1029	0.63	1113	0.77	—	—	—	—	—	—	—	—
2469	1300	718	0.23	805	0.33	886	0.44	967	0.55	1047	0.68	1125	0.82	—	—	—	—	—	—	—	—
2659	1400	759	0.27	842	0.38	918	0.49	993	0.61	1068	0.74	1142	0.88	1286	1.19	—	—	—	—	—	—
2849	1500	801	0.31	880	0.43	952	0.55	1023	0.67	1093	0.81	1163	0.95	1299	1.26	1432	1.62	—	—	—	—
3038	1600	844	0.36	919	0.49	988	0.62	1055	0.74	1121	0.88	1186	1.02	1316	1.34	1442	1.70	—	—	—	—
3228	1700	888	0.42	959	0.55	1026	0.69	1089	0.82	1151	0.96	1213	1.11	1335	1.43	1456	1.79	1574	2.18	—	—
3418	1800	933	0.48	1000	0.62	1064	0.76	1124	0.91	1183	1.05	1242	1.20	1358	1.53	1473	1.89	1586	2.28	1697	2.70
3608	1900	978	0.55	1040	0.69	1103	0.85	1161	1.00	1217	1.15	1273	1.30	1383	1.63	1493	2.00	1601	2.39	1707	2.82
3798	2000	1023	0.63	1082	0.77	1142	0.94	1198	1.09	1252	1.25	1305	1.41	1411	1.75	1515	2.12	1619	2.52	1721	2.94
3988	2100	1068	0.71	1124	0.86	1182	1.03	1237	1.20	1289	1.36	1340	1.53	1440	1.88	1540	2.25	1639	2.65	1738	3.08
4178	2200	1114	0.80	1167	0.96	1222	1.13	1275	1.31	1326	1.49	1375	1.66	1471	2.01	1567	2.39	1662	2.80	1756	3.23
4368	2300	1159	0.90	1210	1.06	1263	1.24	1315	1.43	1364	1.61	1411	1.79	1504	2.16	1596	2.54	1687	2.95	1778	3.39
4558	2400	1204	1.01	1254	1.18	1305	1.36	1355	1.56	1403	1.75	1449	1.94	1538	2.32	1626	2.71	1714	3.12	1801	3.57
4937	2600	1296	1.25	1344	1.44	1389	1.62	1436	1.83	1481	2.04	1525	2.25	1609	2.66	1691	3.07	1772	3.50	1853	3.95
5317	2800	1388	1.53	1434	1.74	1475	1.93	1518	2.14	1562	2.37	1604	2.60	1684	3.04	1761	3.48	1837	3.93	1912	4.39
5697	3000	1481	1.85	1525	2.07	1563	2.28	1603	2.49	1643	2.73	1684	2.98	1760	3.46	1834	3.93	1905	4.40	1976	4.89
6077	3200	1573	2.20	1615	2.45	1653	2.67	1689	2.90	1727	3.14	1765	3.40	1839	3.92	1909	4.42	1977	4.93	2044	5.43
6457	3400	1669	2.63	1706	2.87	1743	3.12	1777	3.35	1811	3.60	1847	3.86	1918	4.41	1986	4.96	2051	5.50	2115	6.03

VOL. CFM	OUTLET VEL. FPM	4 S.P.		4.5 S.P.		5 S.P.		5.5 S.P.		6 S.P.		6.5 S.P.		7 S.P.		7.5 S.P.		8 S.P.		8.5 S.P.	
		RPM	BHP	RPM	BHP	RPM	BHP	RPM	BHP	RPM	BHP	RPM	BHP	RPM	BHP	RPM	BHP	RPM	BHP	RPM	BHP
3988	2100	1834	3.54	1930	4.03	2023	4.54	—	—	—	—	—	—	—	—	—	—	—	—	—	—
4178	2200	1850	3.69	1942	4.18	2033	4.69	2122	5.23	—	—	—	—	—	—	—	—	—	—	—	—
4368	2300	1868	3.86	1957	4.35	2044	4.86	2131	5.40	2216	5.97	—	—	—	—	—	—	—	—	—	—
4558	2400	1888	4.04	1974	4.53	2059	5.04	2143	5.58	2226	6.15	2307	6.74	—	—	—	—	—	—	—	—
4937	2600	1934	4.43	2014	4.93	2094	5.45	2172	6.00	2251	6.57	2328	7.15	2405	7.77	2480	8.40	—	—	—	—
5317	2800	1987	4.88	2062	5.39	2136	5.92	2211	6.47	2284	7.04	2357	7.64	2430	8.25	2502	8.89	2573	9.54	2643	10.22
5697	3000	2046	5.38	2116	5.90	2186	6.44	2256	7.00	2325	7.58	2394	8.19	2463	8.81	2531	9.44	2599	10.10	2666	10.78
6077	3200	2110	5.95	2176	6.48	2241	7.03	2307	7.60	2372	8.19	2438	8.80	2503	9.42	2567	10.07	2631	10.73	—	—
6457	3400	2177	6.57	2240	7.12	2302	7.68	2364	8.26	2425	8.86	2487	9.48	2548	10.11	2610	10.77	—	—	—	—
6836	3600	2248	7.24	2307	7.81	2366	8.39	2425	8.99	2483	9.60	2542	10.23	2600	10.87	2658	11.53	—	—	—	—
7216	3800	2321	7.98	2378	8.57	2434	9.17	2490	9.79	2545	10.41	2601	11.05	2656	11.70	—	—	—	—	—	—
7596	4000	2396	8.76	2451	9.39	2504	10.02	2558	10.65	2611	11.29	2664	11.94	—	—	—	—	—	—	—	—
7976	4200	2473	9.60	2526	10.26	2577	10.92	2628	11.58	—	—	—	—	—	—	—	—	—	—	—	—
8356	4400	2551	10.49	2602	11.19	2652	11.88	—	—	—	—	—	—	—	—	—	—	—	—	—	—
8735	4600	2630	11.44	—	—	—	—	—	—	—	—	—	—	—	—	—	—	—	—	—	—

Performance shown is for installation type B—Free inlet, Ducted outlet. Power rating (BHP) does not include drive losses. Performance ratings do not include the effects of appurtenances in the airstream. Data in bold face indicates quietest and most efficient performance.

Class I Blowers
 Class II Blowers





MODEL B
BELT DRIVEN UTILITY VENT SET-BACKWARD INCLINED



Performance B-200

TIP SPEED (FPM) = 5.236 x RPM **OUTLET** { 2.318 Sq. Ft. Inside
211/2" x 157/8" Outside **MAX. HP** = 1.0139 $\left(\frac{\text{RPM}}{1000}\right)^3$

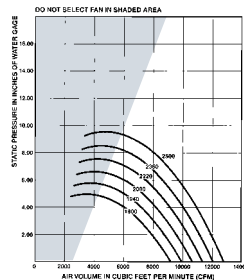
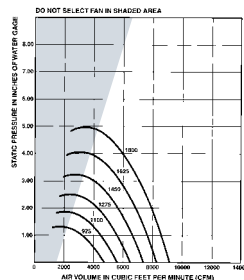
WHEEL DIAMETER—20" **INLET** { 2.435 Sq. Ft. Inside
211/2" Dia. Outside **MAX. RPM**
CL.1 1866
CL.2 2432

VOL. CFM	OUTLET VEL. FPM	.25 S.P.		.5 S.P.		.75 S.P.		1 S.P.		1.25 S.P.		1.5 S.P.		2 S.P.		2.5 S.P.		3 S.P.		3.5 S.P.	
		RPM	BHP	RPM	BHP	RPM	BHP	RPM	BHP	RPM	BHP	RPM	BHP	RPM	BHP	RPM	BHP	RPM	BHP	RPM	BHP
1854	800	492	0.12	610	0.22	716	0.34	—	—	—	—	—	—	—	—	—	—	—	—	—	—
2086	900	524	0.15	632	0.26	731	0.38	—	—	—	—	—	—	—	—	—	—	—	—	—	—
2318	1000	558	0.18	658	0.29	751	0.42	838	0.56	920	0.70	—	—	—	—	—	—	—	—	—	—
2550	1100	594	0.21	686	0.33	774	0.47	856	0.62	934	0.77	—	—	—	—	—	—	—	—	—	—
2782	1200	632	0.25	717	0.38	799	0.53	877	0.68	951	0.84	1022	1.00	—	—	—	—	—	—	—	—
3013	1300	670	0.30	750	0.43	827	0.58	901	0.75	971	0.91	1039	1.09	—	—	—	—	—	—	—	—
3245	1400	710	0.35	784	0.49	857	0.65	926	0.82	994	1.00	1059	1.18	1182	1.56	—	—	—	—	—	—
3477	1500	750	0.41	820	0.56	888	0.72	954	0.90	1019	1.08	1081	1.28	1200	1.67	1312	2.09	—	—	—	—
3709	1600	791	0.47	857	0.63	921	0.80	984	0.99	1045	1.18	1105	1.38	1219	1.79	1328	2.23	1431	2.68	—	—
3941	1700	833	0.55	895	0.71	955	0.89	1015	1.08	1074	1.28	1131	1.49	1241	1.92	1346	2.37	1446	2.84	1542	3.33
4172	1800	875	0.63	933	0.80	991	0.99	1048	1.18	1104	1.39	1158	1.61	1264	2.06	1365	2.53	1463	3.01	1556	3.51
4404	1900	917	0.73	972	0.90	1027	1.09	1081	1.29	1135	1.51	1187	1.73	1289	2.20	1387	2.68	1481	3.19	1572	3.71
4636	2000	960	0.83	1012	1.01	1064	1.20	1116	1.42	1167	1.64	1218	1.87	1316	2.35	1410	2.85	1502	3.37	1590	3.91
4868	2100	1003	0.94	1053	1.13	1102	1.33	1152	1.55	1201	1.77	1249	2.01	1344	2.51	1435	3.03	1524	3.57	1609	4.12
5100	2200	1046	1.06	1093	1.26	1141	1.47	1188	1.69	1235	1.92	1282	2.17	1373	2.68	1461	3.21	1547	3.77	1631	4.34
5331	2300	1089	1.20	1134	1.40	1180	1.61	1225	1.84	1271	2.08	1315	2.33	1403	2.86	1489	3.41	1572	3.98	1653	4.57
5563	2400	1132	1.34	1176	1.55	1220	1.77	1263	2.00	1307	2.25	1350	2.51	1434	3.05	1517	3.61	1598	4.20	1677	4.80
6027	2600	1220	1.67	1260	1.89	1301	2.12	1341	2.37	1381	2.63	1421	2.90	1500	3.46	1578	4.06	1654	4.68	1728	5.31
6490	2800	1308	2.05	1345	2.28	1382	2.53	1420	2.79	1457	3.06	1495	3.34	1568	3.93	1641	4.55	1713	5.20	1784	5.87
6954	3000	1396	2.49	1431	2.73	1466	2.99	1501	3.26	1536	3.55	1571	3.84	1640	4.46	1709	5.10	1776	5.78	1843	6.48
7418	3200	1485	2.98	1517	3.24	1550	3.51	1583	3.80	1616	4.09	1648	4.40	1714	5.04	1778	5.71	1842	6.42	1906	7.14
7881	3400	1573	3.54	1604	3.82	1635	4.10	1666	4.40	1697	4.71	1727	5.02	1789	5.69	1850	6.39	1911	7.12	1971	7.87

VOL. CFM	OUTLET VEL. FPM	4 S.P.		4.5 S.P.		5 S.P.		5.5 S.P.		6 S.P.		6.5 S.P.		7 S.P.		7.5 S.P.		8 S.P.		8.5 S.P.	
		RPM	BHP	RPM	BHP	RPM	BHP	RPM	BHP	RPM	BHP	RPM	BHP	RPM	BHP	RPM	BHP	RPM	BHP	RPM	BHP
4868	2100	1693	4.69	1774	5.27	1852	5.86	—	—	—	—	—	—	—	—	—	—	—	—	—	—
5100	2200	1712	4.92	1791	5.52	1867	6.13	1942	6.75	2016	7.39	—	—	—	—	—	—	—	—	—	—
5331	2300	1732	5.17	1809	5.78	1884	6.41	1957	7.05	2029	7.70	—	—	—	—	—	—	—	—	—	—
5563	2400	1754	5.42	1829	6.06	1902	6.70	1974	7.36	2044	8.03	2113	8.71	2180	9.40	—	—	—	—	—	—
6027	2600	1801	5.97	1873	6.63	1943	7.31	2011	8.01	2078	8.71	2144	9.42	2209	10.15	2273	10.88	2335	11.62	—	—
6490	2800	1853	6.55	1921	7.25	1988	7.97	2053	8.69	2118	9.43	2181	10.18	2243	10.94	2304	11.71	2365	12.48	2424	13.27
6954	3000	1909	7.19	1973	7.92	2037	8.67	2100	9.43	2162	10.20	2222	10.99	2282	11.78	2341	12.58	2399	13.39	—	—
7418	3200	1968	7.89	2030	8.65	2091	9.43	2151	10.22	2210	11.03	2268	11.85	2326	12.67	2382	13.51	—	—	—	—
7881	3400	2030	8.64	2089	9.43	2147	10.24	2205	11.07	2261	11.91	2318	12.76	2373	13.62	2427	14.49	—	—	—	—
8345	3600	2095	9.46	2152	10.28	2207	11.12	2262	11.98	2317	12.85	2370	13.73	2424	14.62	—	—	—	—	—	—
8808	3800	2163	10.35	2216	11.20	2270	12.07	2322	12.95	2375	13.85	2426	14.76	—	—	—	—	—	—	—	—
9272	4000	2232	11.32	2284	12.20	2335	13.09	2385	14.00	—	—	—	—	—	—	—	—	—	—	—	—
9736	4200	2304	12.37	2353	13.27	2402	14.19	—	—	—	—	—	—	—	—	—	—	—	—	—	—
10199	4400	2377	13.50	2424	14.43	—	—	—	—	—	—	—	—	—	—	—	—	—	—	—	—

Performance shown is for installation type B—Free inlet, Ducted outlet. Power rating (BHP) does not include drive losses. Performance ratings do not include the effects of appurtenances in the airstream. Data in bold face indicates quietest and most efficient performance.

- Class I Blowers
- Class II Blowers





MODEL B
BELT DRIVEN UTILITY VENT SET-BACKWARD INCLINED



Performance B-222

TIP SPEED (FPM) = 5.825 x RPM OUTLET { 2.827 Sq. Ft. Inside
24" x 173/8" Outside MAX. HP = 1.8739 $\left(\frac{\text{RPM}}{1000}\right)^3$

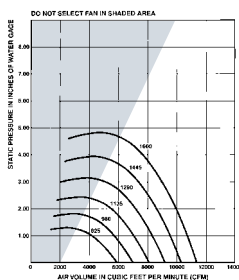
WHEEL DIAMETER—221/4" INLET { 3.015 Sq. Ft. Inside
237/8" Dia. Outside MAX. RPM
CL.1 1661
CL.2 2166

VOL. CFM	OUTLET VEL. FPM	.25 S.P.		.5 S.P.		.75 S.P.		1 S.P.		1.25 S.P.		1.5 S.P.		2 S.P.		2.5 S.P.		3 S.P.		3.5 S.P.	
		RPM	BHP	RPM	BHP	RPM	BHP	RPM	BHP	RPM	BHP	RPM	BHP	RPM	BHP	RPM	BHP	RPM	BHP	RPM	BHP
2262	800	428	0.15	536	0.27	—	—	—	—	—	—	—	—	—	—	—	—	—	—	—	—
2544	900	456	0.18	553	0.30	645	0.45	—	—	—	—	—	—	—	—	—	—	—	—	—	—
2827	1000	486	0.21	574	0.35	659	0.50	741	0.67	—	—	—	—	—	—	—	—	—	—	—	—
3110	1100	517	0.25	598	0.39	677	0.56	753	0.73	827	0.93	—	—	—	—	—	—	—	—	—	—
3392	1200	550	0.30	624	0.45	697	0.62	768	0.80	838	1.00	905	1.22	—	—	—	—	—	—	—	—
3675	1300	584	0.36	653	0.51	720	0.69	787	0.88	852	1.09	916	1.30	—	—	—	—	—	—	—	—
3958	1400	619	0.42	683	0.59	746	0.77	808	0.97	870	1.18	930	1.40	1046	1.89	—	—	—	—	—	—
4241	1500	655	0.49	714	0.67	773	0.86	831	1.06	889	1.28	946	1.51	1058	2.01	—	—	—	—	—	—
4523	1600	691	0.57	746	0.76	802	0.95	857	1.16	911	1.39	965	1.63	1071	2.14	1173	2.69	—	—	—	—
4806	1700	727	0.66	779	0.86	832	1.06	883	1.28	935	1.51	986	1.75	1087	2.28	1185	2.84	—	—	—	—
5089	1800	764	0.76	813	0.97	863	1.18	912	1.40	961	1.64	1009	1.89	1105	2.43	1199	3.00	1291	3.62	1380	4.27
5371	1900	801	0.88	848	1.09	894	1.31	941	1.54	988	1.79	1034	2.04	1125	2.59	1215	3.18	1303	3.81	1389	4.47
5654	2000	838	1.00	883	1.22	927	1.45	971	1.69	1016	1.94	1060	2.21	1147	2.77	1233	3.37	1318	4.01	1401	4.68
5937	2100	876	1.13	918	1.36	960	1.60	1003	1.85	1045	2.11	1087	2.38	1171	2.95	1253	3.57	1335	4.22	1415	4.91
6219	2200	913	1.28	954	1.52	994	1.76	1035	2.02	1075	2.29	1115	2.57	1195	3.16	1275	3.78	1353	4.45	1430	5.14
6502	2300	951	1.44	990	1.69	1029	1.94	1067	2.21	1106	2.49	1145	2.77	1221	3.37	1297	4.01	1373	4.69	1447	5.40
6785	2400	989	1.61	1027	1.87	1064	2.14	1101	2.41	1138	2.70	1175	2.99	1248	3.61	1322	4.26	1394	4.95	1466	5.67
7350	2600	1066	2.01	1100	2.28	1134	2.56	1169	2.86	1203	3.16	1237	3.47	1305	4.11	1373	4.80	1441	5.51	1508	6.26
7916	2800	1143	2.46	1175	2.75	1206	3.06	1238	3.37	1270	3.68	1302	4.01	1365	4.69	1428	5.40	1491	6.14	1554	6.92
8481	3000	1220	2.98	1250	3.29	1279	3.61	1309	3.94	1339	4.28	1368	4.62	1428	5.33	1487	6.07	1546	6.85	1604	7.65
9046	3200	1297	3.57	1325	3.90	1353	4.24	1381	4.59	1409	4.94	1437	5.30	1492	6.05	1548	6.82	1603	7.62	1658	8.45
9612	3400	1375	4.24	1401	4.59	1428	4.95	1454	5.31	1480	5.69	1506	6.07	1559	6.84	1611	7.65	1663	8.48	1715	9.34

VOL. CFM	OUTLET VEL. FPM	4 S.P.		4.5 S.P.		5 S.P.		5.5 S.P.		6 S.P.		6.5 S.P.		7 S.P.		7.5 S.P.		8 S.P.		8.5 S.P.	
		RPM	BHP	RPM	BHP	RPM	BHP	RPM	BHP	RPM	BHP	RPM	BHP	RPM	BHP	RPM	BHP	RPM	BHP	RPM	BHP
5937	2100	1493	5.62	1570	6.37	—	—	—	—	—	—	—	—	—	—	—	—	—	—	—	—
6219	2200	1506	5.87	1580	6.64	—	—	—	—	—	—	—	—	—	—	—	—	—	—	—	—
6502	2300	1521	6.14	1593	6.91	1664	7.71	—	—	—	—	—	—	—	—	—	—	—	—	—	—
6785	2400	1537	6.42	1607	7.21	1676	8.02	1743	8.86	—	—	—	—	—	—	—	—	—	—	—	—
7350	2600	1574	7.04	1640	7.84	1705	8.68	1769	9.54	1832	10.43	1894	11.35	—	—	—	—	—	—	—	—
7916	2800	1616	7.72	1678	8.55	1739	9.41	1800	10.30	1860	11.21	1919	12.15	1978	13.11	2036	4.10	2093	15.11	—	—
8481	3000	1663	8.48	1721	9.33	1779	10.22	1836	11.13	1893	12.07	1949	13.03	2005	14.01	2060	15.02	2115	16.05	—	—
9046	3200	1713	9.31	1768	10.19	1823	11.10	1877	12.04	1931	13.00	1984	13.99	2037	15.00	2090	16.03	2142	17.08	—	—
9612	3400	1767	10.23	1819	11.14	1870	12.08	1922	13.04	1973	14.02	2024	15.03	2074	16.07	2125	17.12	—	—	—	—
10177	3600	1823	11.23	1872	12.17	1921	13.13	1970	14.12	2019	15.13	2067	16.17	2115	17.23	2163	18.31	—	—	—	—
10743	3800	1882	12.32	1929	13.29	1975	14.29	2022	15.30	2068	16.34	2114	17.40	2160	18.48	—	—	—	—	—	—
11308	4000	1943	13.51	1987	14.51	2031	15.53	2076	16.58	2120	17.64	2164	18.73	—	—	—	—	—	—	—	—
11873	4200	2005	14.80	2048	15.82	2090	16.88	2132	17.95	—	—	—	—	—	—	—	—	—	—	—	—
12439	4400	2070	16.18	2110	17.25	2150	18.33	—	—	—	—	—	—	—	—	—	—	—	—	—	—
13004	4600	2135	17.68	—	—	—	—	—	—	—	—	—	—	—	—	—	—	—	—	—	—

Performance shown is for installation type B—Free inlet, Ducted outlet. Power rating (BHP) does not include drive losses. Performance ratings do not include the effects of appurtenances in the airstream. Data in bold face indicates quietest and most efficient performance.

□ Class I Blowers
■ Class II Blowers





Performance B-245

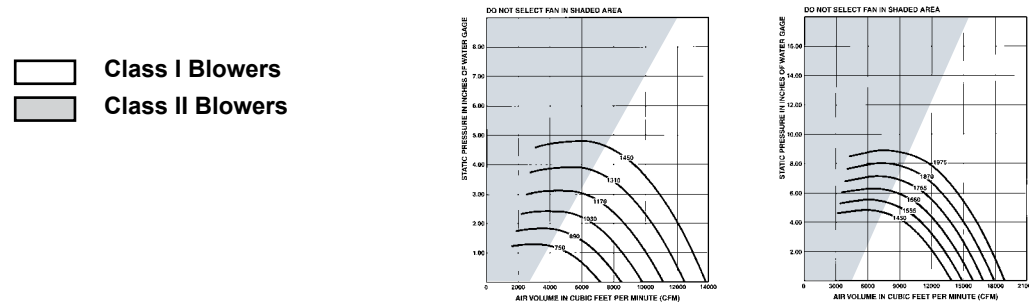
TIP SPEED (FPM) = 6.414 x RPM OUTLET { 3.458 Sq. Ft. Inside
261/4" x 191/4" Outside MAX. HP = 3.0246 $\left(\frac{\text{RPM}}{1000}\right)^3$

WHEEL DIAMETER—241/2" INLET { 3.650 Sq. Ft. Inside
263/8" Dia. Outside MAX. RPM
CL.1 1508
CL.2 1967

VOL. CFM	OUTLET VEL. FPM	.25 S.P.		.5 S.P.		.75 S.P.		1 S.P.		1.25 S.P.		1.5 S.P.		2 S.P.		2.5 S.P.		3 S.P.		3.5 S.P.	
		RPM	BHP	RPM	BHP	RPM	BHP	RPM	BHP	RPM	BHP	RPM	BHP	RPM	BHP	RPM	BHP	RPM	BHP	RPM	BHP
3458	1000	444	0.26	523	0.42	600	0.61	674	0.82	—	—	—	—	—	—	—	—	—	—	—	—
3804	1100	473	0.31	545	0.48	616	0.68	685	0.90	752	1.13	—	—	—	—	—	—	—	—	—	—
4150	1200	503	0.37	570	0.55	635	0.76	700	0.98	762	1.23	823	1.49	—	—	—	—	—	—	—	—
4495	1300	534	0.44	596	0.63	657	0.85	717	1.08	776	1.33	833	1.59	—	—	—	—	—	—	—	—
4841	1400	566	0.52	623	0.72	680	0.94	736	1.18	792	1.44	846	1.71	951	2.31	—	—	—	—	—	—
5187	1500	599	0.61	652	0.82	705	1.05	758	1.30	810	1.57	862	1.85	962	2.45	—	—	—	—	—	—
5533	1600	632	0.71	682	0.93	732	1.17	781	1.43	831	1.70	879	1.99	975	2.61	1067	3.29	—	—	—	—
5879	1700	665	0.82	712	1.06	759	1.31	806	1.57	853	1.85	899	2.15	990	2.79	1078	3.47	1164	4.21	—	—
6224	1800	699	0.95	743	1.19	788	1.45	832	1.73	876	2.02	920	2.32	1007	2.97	1091	3.67	1174	4.42	—	—
6570	1900	733	1.09	775	1.34	817	1.61	859	1.90	901	2.20	943	2.51	1025	3.17	1106	3.89	1186	4.65	1263	5.46
6916	2000	767	1.24	807	1.51	847	1.79	887	2.08	927	2.39	967	2.71	1046	3.39	1123	4.12	1200	4.90	1274	5.72
7262	2100	802	1.41	840	1.68	878	1.98	916	2.28	954	2.60	992	2.93	1067	3.63	1142	4.37	1215	5.17	1287	6.00
7608	2200	836	1.59	873	1.88	909	2.18	946	2.50	982	2.82	1018	3.16	1090	3.88	1162	4.64	1232	5.45	1302	6.30
7953	2300	871	1.79	906	2.09	941	2.40	975	2.73	1010	3.06	1045	3.41	1114	4.15	1183	4.92	1251	5.75	1318	6.61
8299	2400	906	2.00	939	2.32	973	2.64	1006	2.98	1039	3.32	1073	3.68	1139	4.43	1205	5.23	1270	6.07	1335	6.95
8991	2600	976	2.49	1007	2.83	1038	3.17	1069	3.53	1099	3.90	1130	4.28	1191	5.07	1253	5.90	1313	6.77	1374	7.68
9682	2800	1046	3.05	1075	3.41	1104	3.78	1132	4.16	1161	4.55	1190	4.95	1247	5.78	1304	6.64	1360	7.55	1417	8.49
10374	3000	1117	3.70	1144	4.08	1171	4.48	1197	4.88	1224	5.29	1251	5.71	1304	6.58	1357	7.48	1411	8.42	1463	9.40
11066	3200	1188	4.44	1213	4.84	1238	5.26	1263	5.68	1289	6.12	1314	6.56	1364	7.47	1414	8.41	1463	9.39	1513	10.40
11757	3400	1259	5.26	1283	5.69	1307	6.13	1330	6.58	1354	7.04	1377	7.50	1425	8.45	1472	9.43	1519	10.45	1566	11.50
12449	3600	1331	6.20	1353	6.65	1375	7.11	1398	7.58	1420	8.06	1442	8.55	1487	9.54	1531	10.56	1576	11.62	1620	12.70
13140	3800	1402	7.23	1423	7.71	1445	8.20	1466	8.69	1487	9.19	1508	9.70	1550	10.74	1592	11.80	1634	12.90	1676	14.02

VOL. CFM	OUTLET VEL. FPM	4 S.P.		4.5 S.P.		5 S.P.		5.5 S.P.		6 S.P.		6.5 S.P.		7 S.P.		7.5 S.P.		8 S.P.		8.5 S.P.	
		RPM	BHP	RPM	BHP	RPM	BHP	RPM	BHP	RPM	BHP	RPM	BHP	RPM	BHP	RPM	BHP	RPM	BHP	RPM	BHP
7262	2100	1358	6.87	1427	7.79	—	—	—	—	—	—	—	—	—	—	—	—	—	—	—	—
7608	2200	1370	7.18	1437	8.11	1503	9.07	—	—	—	—	—	—	—	—	—	—	—	—	—	—
7953	2300	1384	7.51	1449	8.45	1513	9.43	1576	10.44	—	—	—	—	—	—	—	—	—	—	—	—
8299	2400	1399	7.86	1462	8.82	1524	9.81	1585	10.83	1646	11.88	—	—	—	—	—	—	—	—	—	—
8991	2600	1434	8.62	1493	9.61	1551	10.62	1609	11.67	1666	12.76	1723	13.87	1778	15.01	—	—	—	—	—	—
9682	2800	1473	9.47	1528	10.48	1584	11.53	1638	12.61	1692	13.72	1746	14.86	1799	16.03	1851	17.23	1903	18.45	—	—
10374	3000	1516	10.41	1568	11.45	1620	12.53	1672	13.64	1723	14.78	1774	15.94	1825	17.14	1874	18.37	1924	19.63	—	—
11066	3200	1563	11.44	1612	12.52	1661	13.63	1710	14.77	1759	15.93	1807	17.13	1855	18.36	1902	19.62	1950	20.90	—	—
11757	3400	1612	12.57	1659	13.69	1705	14.83	1752	16.00	1798	17.20	1844	18.43	1889	19.69	1934	20.97	—	—	—	—
12449	3600	1664	13.82	1709	14.97	1753	16.14	1796	17.34	1840	18.58	1884	19.84	1927	21.12	—	—	—	—	—	—
13140	3800	1718	15.17	1760	16.36	1802	17.57	1844	18.80	1886	20.07	1927	21.36	—	—	—	—	—	—	—	—
13832	4000	1774	16.65	1814	17.87	1854	19.11	1894	20.38	1934	21.68	—	—	—	—	—	—	—	—	—	—
14524	4200	1832	18.24	1870	19.50	1908	20.78	1946	22.09	—	—	—	—	—	—	—	—	—	—	—	—
15215	4400	1891	19.96	1927	21.26	1963	22.58	—	—	—	—	—	—	—	—	—	—	—	—	—	—
15907	4600	1951	21.82	—	—	—	—	—	—	—	—	—	—	—	—	—	—	—	—	—	—

Performance shown is for installation type B—Free inlet, Ducted outlet. Power rating (BHP) does not include drive losses. Performance ratings do not include the effects of appurtenances in the airstream. Data in bold face indicates quietest and most efficient performance.





MODEL B
BELT DRIVEN UTILITY VENT SET-BACKWARD INCLINED



Performance B-270

TIP SPEED (FPM) = 7.069 x RPM

OUTLET { 4.19 Sq. Ft. Inside
29" x 21 1/4" Outside

MAX. HP = 3.15

$\left(\frac{\text{RPM}}{1000}\right)^3$

WHEEL DIAMETER—27"

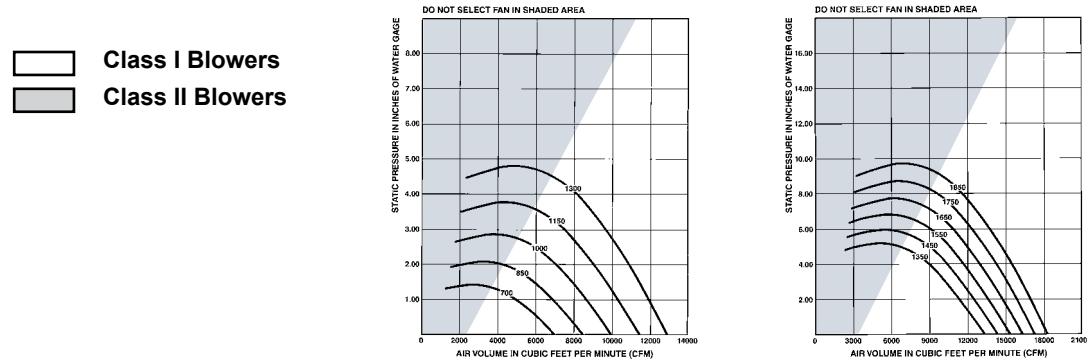
INLET { 4.430 Sq. Ft. Inside
29" Dia. Outside

MAX. RPM
CL.1 1453
CL.2 1893

VOL. CFM	OUTLET VEL. FPM	RPM		RPM		RPM		RPM		RPM		RPM		RPM		RPM		RPM		RPM		RPM	
		BHP	BHP	BHP	BHP	BHP	BHP	BHP	BHP	BHP	BHP	BHP	BHP	BHP	BHP	BHP	BHP	BHP	BHP	BHP	BHP	BHP	BHP
3352	800	421	0.23	458	0.30	490	0.38	524	0.46	555	0.54	587	0.63	617	0.72	—	—	—	—	—	—	—	—
3771	900	456	0.28	490	0.36	520	0.44	551	0.53	579	0.62	609	0.72	636	0.81	690	1.02	—	—	—	—	—	—
4190	1000	492	0.34	524	0.43	551	0.52	580	0.62	606	0.71	634	0.81	659	0.91	709	1.13	759	1.35	—	—	—	—
4609	1100	530	0.42	559	0.51	585	0.61	612	0.71	636	0.81	661	0.92	685	1.02	732	1.25	778	1.49	823	1.73	—	—
5028	1200	568	0.50	595	0.61	619	0.71	644	0.82	667	0.92	691	1.04	713	1.15	757	1.39	801	1.64	843	1.89	884	2.16
5447	1300	606	0.60	632	0.71	655	0.82	679	0.94	700	1.05	723	1.17	743	1.29	785	1.54	826	1.80	866	2.07	905	2.35
5866	1400	645	0.71	670	0.83	691	0.95	714	1.07	734	1.19	756	1.32	775	1.44	815	1.71	853	1.98	891	2.26	928	2.55
6285	1500	684	0.84	708	0.97	728	1.09	750	1.22	769	1.35	789	1.48	808	1.61	846	1.89	882	2.17	918	2.46	953	2.77
6704	1600	724	0.98	746	1.12	766	1.25	786	1.39	805	1.52	824	1.66	842	1.80	878	2.09	913	2.38	947	2.69	981	3.00
7123	1700	764	1.14	785	1.29	804	1.42	823	1.57	841	1.71	860	1.86	877	2.00	911	2.31	944	2.62	977	2.93	1009	3.26
7542	1800	804	1.32	824	1.47	842	1.62	861	1.77	878	1.92	896	2.08	912	2.23	945	2.54	977	2.87	1009	3.20	1039	3.53
7961	1900	845	1.51	864	1.68	881	1.83	899	1.99	915	2.15	933	2.31	948	2.47	980	2.80	1011	3.14	1041	3.48	1070	3.83
8380	2000	885	1.73	904	1.90	920	2.06	937	2.23	953	2.39	970	2.57	985	2.73	1015	3.08	1045	3.43	1074	3.78	1103	4.15
9218	2200	967	2.23	984	2.42	999	2.59	1015	2.78	1030	2.96	1045	3.15	1059	3.32	1088	3.70	1115	4.08	1143	4.46	1169	4.85
10056	2400	1049	2.82	1065	3.02	1079	3.21	1094	3.42	1107	3.61	1122	3.82	1135	4.01	1162	4.41	1188	4.82	1213	5.23	1238	5.65
10894	2600	1131	3.51	1146	3.73	1159	3.94	1173	4.16	1186	4.36	1200	4.59	1212	4.80	1237	5.23	1262	5.67	1286	6.11	1309	6.56
11732	2800	1214	4.31	1228	4.55	1240	4.77	1253	5.01	1265	5.23	1278	5.47	1290	5.69	1314	6.16	1337	6.63	1360	7.10	1382	7.58
12570	3000	1297	5.23	1310	5.48	1322	5.72	1334	5.98	1346	6.21	1358	6.47	1369	6.71	1391	7.20	1413	7.70	1435	8.21	1456	8.71
13408	3200	1380	6.27	1392	6.54	1403	6.80	1415	7.07	1426	7.32	1438	7.60	1448	7.85	1470	8.38	1491	8.91	1511	9.44	1531	9.98
14246	3400	1463	7.45	1475	7.74	1485	8.01	1497	8.30	1507	8.57	1518	8.86	1528	9.13	1548	9.69	1568	10.25	1588	10.81	1607	11.38
15084	3600	1547	8.77	1558	9.08	1568	9.36	1579	9.67	1588	9.95	1599	10.26	1608	10.55	1628	11.14	1647	11.73	1666	12.33	1684	12.93
15922	3800	1630	10.25	1641	10.57	1650	10.87	1661	11.19	1670	11.49	1680	11.82	1689	12.12	1708	12.74	1726	13.37	1744	14.00	1762	14.63
16760	4000	1714	11.88	1724	12.22	1733	12.54	1743	12.88	1752	13.19	1761	13.54	1770	13.85	1788	14.51	1806	15.17	1823	15.83	1840	16.49

VOL. CFM	OUTLET VEL. FPM	3 S.P.		3.5 S.P.		4 S.P.		4.5 S.P.		5 S.P.		5.5 S.P.		6 S.P.		6.5 S.P.		7 S.P.		7.5 S.P.		8 S.P.		8.5 S.P.	
		RPM	BHP	RPM	BHP	RPM	BHP	RPM	BHP	RPM	BHP	RPM	BHP	RPM	BHP	RPM	BHP	RPM	BHP	RPM	BHP	RPM	BHP	RPM	BHP
5447	1300	—	—	—	—	—	—	—	—	—	—	—	—	—	—	—	—	—	—	—	—	—	—	—	—
5866	1400	1071	3.79	—	—	—	—	—	—	—	—	—	—	—	—	—	—	—	—	—	—	—	—	—	—
6285	1500	1089	4.05	1154	4.74	—	—	—	—	—	—	—	—	—	—	—	—	—	—	—	—	—	—	—	—
6704	1600	1110	4.33	1172	5.04	1233	5.78	—	—	—	—	—	—	—	—	—	—	—	—	—	—	—	—	—	—
7123	1700	1133	4.63	1193	5.36	1251	6.12	1309	6.91	1365	7.72	—	—	—	—	—	—	—	—	—	—	—	—	—	—
7542	1800	1158	4.96	1215	5.71	1271	6.49	1327	7.29	1381	8.12	1434	8.97	—	—	—	—	—	—	—	—	—	—	—	—
7961	1900	1185	5.30	1240	6.08	1294	6.88	1347	7.70	1399	8.55	1450	9.43	1501	10.32	—	—	—	—	—	—	—	—	—	—
8380	2000	1212	5.67	1265	6.46	1317	7.29	1369	8.14	1419	9.01	1469	9.90	1517	10.82	1566	11.76	—	—	—	—	—	—	—	—
9218	2200	1272	6.47	1321	7.32	1369	8.19	1417	9.08	1464	10.00	1510	10.93	1556	11.89	1601	12.87	1646	13.87	1690	14.89	1734	15.93	—	—
10056	2400	1334	7.38	1381	8.27	1426	9.19	1471	10.13	1515	11.09	1558	12.08	1601	13.08	1644	14.10	1686	15.15	1728	16.21	1769	17.29	1810	18.39
10894	2600	1400	8.39	1444	9.34	1487	10.31	1529	11.30	1570	12.31	1611	13.33	1652	14.38	1692	15.45	1732	16.54	1771	17.64	1810	18.77	1848	19.91
11732	2800	1468	9.52	1509	10.52	1550	11.54	1590	12.58	1629	13.64	1668	14.72	1706	15.81	1744	16.93	1782	18.06	1819	19.21	1856	20.37	1893	21.56
12570	3000	1538	10.78	1577	11.83	1616	12.91	1654	14.00	1691	15.11	1728	16.23	1765	17.37	1801	18.54	1836	19.72	1872	20.91	—	—	—	—
13408	3200	1609	12.16	1647	13.27	1684	14.40	1720	15.54	1756	16.71	1791	17.88	1825	19.08	1860	20.29	—	—	—	—	—	—	—	—
14246	3400	1682	13.68	1718	14.85	1753	16.04	1788	17.24	1822	18.45	1856	19.68	1889	20.92	—	—	—	—	—	—	—	—	—	—
15084	3600	1756	15.35	1790	16.58	1824	17.82	1857	19.08	1890	20.34	—	—	—	—	—	—	—	—	—	—	—	—	—	—
15922	3800	1831	17.17	1864	18.46	—	—	—	—	—	—	—	—	—	—	—	—	—	—	—	—	—	—	—	—

Performance shown is for installation type B—Free inlet, Ducted outlet. Power rating (BHP) does not include drive losses. Performance ratings do not include the effects of appurtenances in the airstream. Data in bold face indicates quietest and most efficient performance.





MODEL B
BELT DRIVEN UTILITY VENT SET-BACKWARD INCLINED



Performance B-300

TIP SPEED (FPM) = 7.854 x RPM

OUTLET { 5.17 Sq. Ft. Inside
33 1/4" x 23 3/8" Outside

MAX. HP = 5.33 $\left(\frac{\text{RPM}}{1000}\right)^3$

WHEEL DIAMETER—30"

INLET { 5.469 Sq. Ft. Inside
32 1/4" Dia. Outside

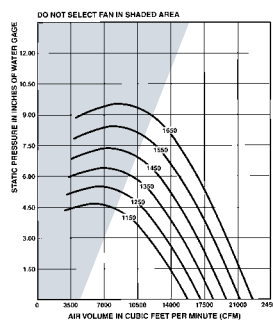
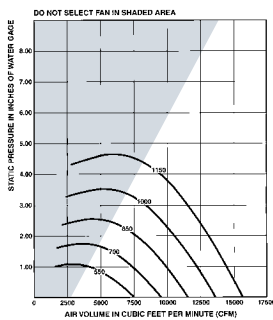
MAX. RPM
CL.1 1308
CL.2 1703

VOL. CFM	OUTLET VEL. FPM	.25 S.P.		.38 S.P.		.50 S.P.		.63 S.P.		.75 S.P.		.88 S.P.		1 S.P.		1.25 S.P.		1.5 S.P.		1.75 S.P.		2 S.P.		2.5 S.P.	
		RPM	BHP	RPM	BHP	RPM	BHP	RPM	BHP	RPM	BHP	RPM	BHP	RPM	BHP	RPM	BHP	RPM	BHP	RPM	BHP	RPM	BHP	RPM	BHP
4136	800	379	0.28	412	0.37	441	0.46	472	0.57	499	0.67	529	0.78	555	0.89	—	—	—	—	—	—	—	—	—	—
4653	900	410	0.34	441	0.45	468	0.54	496	0.66	521	0.76	548	0.89	572	1.00	621	1.25	—	—	—	—	—	—	—	—
5170	1000	443	0.42	471	0.53	496	0.64	522	0.76	545	0.87	570	1.00	593	1.12	638	1.39	683	1.67	—	—	—	—	—	—
5687	1100	476	0.51	503	0.63	526	0.75	550	0.88	572	1.00	595	1.13	616	1.26	659	1.54	700	1.83	741	2.14	780	2.46	—	—
6204	1200	511	0.62	535	0.75	557	0.87	580	1.01	600	1.14	622	1.28	642	1.42	682	1.71	721	2.02	759	2.34	796	2.67	868	3.36
6721	1300	545	0.74	568	0.88	589	1.01	611	1.16	630	1.29	650	1.45	669	1.59	706	1.90	743	2.22	779	2.55	814	2.89	883	3.61
7238	1400	580	0.88	602	1.03	622	1.17	642	1.32	660	1.47	680	1.63	697	1.78	733	2.10	768	2.44	802	2.78	835	3.14	900	3.89
7755	1500	616	1.03	637	1.19	655	1.34	674	1.51	692	1.66	710	1.83	727	1.99	761	2.33	794	2.68	826	3.04	858	3.41	920	4.19
8272	1600	651	1.21	671	1.38	689	1.54	707	1.71	724	1.87	742	2.05	757	2.22	790	2.58	821	2.94	852	3.32	882	3.70	941	4.51
8789	1700	687	1.41	706	1.59	723	1.75	741	1.94	757	2.11	773	2.30	789	2.47	820	2.84	850	3.23	879	3.62	908	4.02	965	4.85
9306	1800	723	1.63	742	1.82	758	1.99	775	2.19	790	2.37	806	2.56	821	2.75	850	3.14	879	3.53	907	3.94	935	4.36	989	5.22
9823	1900	760	1.87	777	2.07	793	2.25	809	2.46	823	2.65	839	2.85	853	3.05	882	3.45	909	3.87	936	4.29	963	4.72	1015	5.61
10340	2000	796	2.13	813	2.35	828	2.54	843	2.75	857	2.95	872	3.17	886	3.37	913	3.80	940	4.23	966	4.67	992	5.12	1042	6.04
11374	2200	870	2.75	885	2.98	899	3.19	913	3.43	926	3.64	940	3.88	953	4.10	979	4.56	1004	5.03	1028	5.50	1052	5.98	1099	6.97
12408	2400	943	3.47	958	3.73	970	3.96	984	4.21	996	4.45	1009	4.71	1021	4.94	1045	5.44	1069	5.95	1092	6.46	1114	6.97	1158	8.02
13442	2600	1017	4.33	1031	4.60	1043	4.85	1056	5.13	1067	5.38	1079	5.66	1090	5.91	1113	6.45	1135	6.99	1157	7.54	1178	8.09	1219	9.21
14476	2800	1092	5.31	1104	5.61	1116	5.88	1128	6.17	1138	6.45	1150	6.74	1160	7.02	1182	7.59	1203	8.17	1223	8.75	1243	9.34	1283	10.53
15510	3000	1166	6.44	1178	6.76	1189	7.05	1200	7.37	1210	7.66	1221	7.98	1231	8.27	1252	8.88	1271	9.50	1291	10.12	1310	10.75	1347	12.01
16544	3200	1241	7.73	1252	8.07	1262	8.38	1273	8.72	1283	9.03	1293	9.37	1303	9.68	1322	10.33	1341	10.99	1359	11.64	1378	12.31	1413	13.64
17578	3400	1316	9.18	1327	9.54	1336	9.87	1346	10.23	1356	10.56	1366	10.92	1375	11.25	1393	11.94	1411	12.64	1429	13.34	1446	14.03	1480	15.45
18612	3600	1391	10.81	1401	11.19	1410	11.54	1420	11.92	1429	12.27	1438	12.65	1447	13.00	1464	13.73	1482	14.47	1499	15.20	1515	15.94	1548	17.43
19646	3800	1466	12.63	1476	13.03	1485	13.40	1494	13.80	1502	14.17	1511	14.57	1519	14.94	1536	15.71	1553	16.48	1569	17.26	1585	18.04	1616	19.60
20680	4000	1542	14.64	1551	15.06	1559	15.45	1568	15.87	1576	16.26	1584	16.68	1592	17.07	1609	17.89	1624	18.70	1640	19.51	1655	20.33	1685	21.97
21714	4200	1617	16.86	1626	17.30	1634	17.71	1642	18.16	1650	18.57	1658	19.01	1666	19.41	1681	20.27	1696	21.12	—	—	—	—	—	—

VOL. CFM	OUTLET VEL. FPM	3 S.P.		3.5 S.P.		4 S.P.		4.5 S.P.		5 S.P.		5.5 S.P.		6 S.P.		6.5 S.P.		7 S.P.		7.5 S.P.		8 S.P.		8.5 S.P.	
		RPM	BHP	RPM	BHP	RPM	BHP	RPM	BHP	RPM	BHP	RPM	BHP	RPM	BHP	RPM	BHP	RPM	BHP	RPM	BHP	RPM	BHP	RPM	BHP
6721	1300	949	4.38	—	—	—	—	—	—	—	—	—	—	—	—	—	—	—	—	—	—	—	—	—	—
7238	1400	963	4.68	1025	5.50	—	—	—	—	—	—	—	—	—	—	—	—	—	—	—	—	—	—	—	—
7755	1500	980	5.00	1039	5.85	1096	6.73	—	—	—	—	—	—	—	—	—	—	—	—	—	—	—	—	—	
8272	1600	999	5.35	1055	6.22	1110	7.13	1164	8.07	—	—	—	—	—	—	—	—	—	—	—	—	—	—	—	
8789	1700	1020	5.72	1073	6.62	1126	7.55	1178	8.52	1228	9.52	—	—	—	—	—	—	—	—	—	—	—	—	—	
9306	1800	1042	6.11	1094	7.04	1144	8.01	1194	9.00	1243	10.02	1291	11.07	—	—	—	—	—	—	—	—	—	—	—	
9823	1900	1066	6.54	1115	7.49	1164	8.48	1212	9.50	1259	10.55	1305	11.63	1351	12.74	—	—	—	—	—	—	—	—	—	
10340	2000	1091	6.99	1139	7.98	1185	8.99	1231	10.04	1277	11.12	1321	12.22	1366	13.35	1409	14.51	—	—	—	—	—	—	—	
11374	2200	1144	7.98	1188	9.03	1232	10.10	1275	11.20	1317	12.23	1359	13.49	1400	14.67	1441	15.88	1481	17.12	1521	18.38	1560	19.66	1599	20.96
12408	2400	1200	9.10	1242	10.21	1283	11.34	1323	12.50	1363	13.69	1402	14.90	1441	16.14	1479	17.40	1517	18.69	1555	20.00	1592	21.33	1628	22.69
13442	2600	1260	10.35	1299	11.52	1337	12.72	1375	13.94	1413	15.18	1450	16.45	1486	17.74	1522	19.06	1558	20.40	1593	21.77	1629	23.15	1663	24.56
14476	2800	1321	11.75	1358	12.98	1395	14.24	1430	15.52	1466	16.83	1501	18.16	1535	19.51	1570	20.88	1603	22.28	1637	23.70	1670	25.14	1703	26.60
15510	3000	1384	13.29	1419	14.59	1454	15.92	1488	17.26	1522	18.63	1555	20.02	1588	21.43	1620	22.87	1652	24.32	1684	25.80	—	—	—	—
16544	3200	1448	15.00	1482	16.37	1515	17.76	1547	19.17	1579	20.61	1611	22.06	1642	23.53	1673	25.03	—	—	—	—	—	—	—	—
17578	3400	1513	16.87	1546	18.32	1577	19.78	1608	21.26	1639	22.76	1669	24.27	1699	25.81	—	—	—	—	—	—	—	—	—	—
18612	3600	1580	18.93	1611	20.44	1641	21.98	1671	23.53	1700	25.09	—	—	—	—	—	—	—	—	—	—	—	—	—	—
19646	3800	1647	21.18	1677	22.76	—	—	—	—	—	—	—	—	—	—	—	—	—	—	—	—	—	—	—	—

Performance shown is for installation type B—Free inlet, Ducted outlet. Power rating (BHP) does not include drive losses. Performance ratings do not include the effects of appurtenances in the airstream. Data in bold face indicates quietest and most efficient performance.

Class I Blowers
Class II Blowers





MODEL B
BELT DRIVEN UTILITY VENT SET-BACKWARD INCLINED



Performance B-330

TIP SPEED (FPM) = 8.639 x RPM

OUTLET { 6.26 Sq. Ft. Inside
353/8" x 257/8" Outside

MAX. HP = 8.59 $\left(\frac{\text{RPM}}{1000}\right)^3$

WHEEL DIAMETER—33"

INLET { 6.618 Sq. Ft. Inside
353/8" Dia. Outside

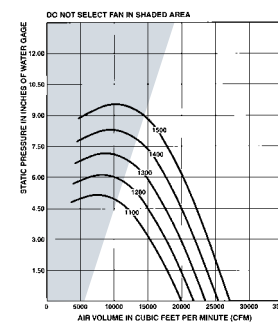
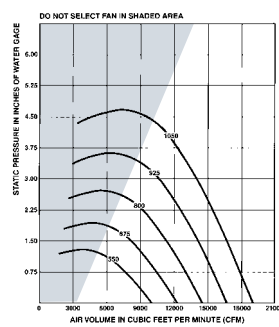
MAX. RPM
CL.1 1189
CL.2 1548

VOL. CFM	OUTLET VEL. FPM	.25 S.P.		.38 S.P.		.50 S.P.		.63 S.P.		.75 S.P.		.88 S.P.		1 S.P.		1.25 S.P.		1.5 S.P.		1.75 S.P.		2 S.P.		2.5 S.P.	
		RPM	BHP	RPM	BHP	RPM	BHP	RPM	BHP	RPM	BHP	RPM	BHP	RPM	BHP	RPM	BHP	RPM	BHP	RPM	BHP	RPM	BHP	RPM	BHP
5008	800	344	0.34	373	0.45	401	0.56	428	0.68	454	0.81	480	0.94	505	1.08	—	—	—	—	—	—	—	—	—	—
5634	900	373	0.42	400	0.54	425	0.66	450	0.79	474	0.93	497	1.07	520	1.21	565	1.52	—	—	—	—	—	—	—	—
6260	1000	403	0.51	428	0.64	451	0.77	474	0.91	496	1.06	518	1.21	539	1.36	580	1.68	621	2.02	660	2.37	—	—	—	—
6886	1100	433	0.62	456	0.76	478	0.91	500	1.06	520	1.21	540	1.37	560	1.53	599	1.87	637	2.22	673	2.59	709	2.98	—	—
7512	1200	464	0.75	486	0.90	507	1.06	527	1.21	546	1.38	565	1.55	583	1.72	620	2.07	655	2.44	690	2.83	724	3.23	789	4.07
8138	1300	496	0.90	516	1.06	536	1.22	554	1.39	573	1.57	591	1.74	608	1.93	642	2.30	676	2.69	708	3.09	740	3.50	803	4.38
8764	1400	528	1.06	547	1.24	565	1.42	583	1.60	601	1.78	618	1.97	634	2.16	667	2.55	698	2.95	729	3.37	759	3.81	819	4.71
9390	1500	560	1.25	578	1.44	596	1.63	613	1.82	629	2.01	645	2.21	661	2.41	692	2.82	722	3.25	751	3.68	780	4.13	836	5.07
10016	1600	592	1.47	610	1.66	627	1.86	643	2.07	658	2.27	674	2.48	689	2.69	718	3.12	747	3.56	775	4.02	802	4.49	856	5.46
10642	1700	625	1.70	642	1.91	658	2.13	673	2.34	688	2.56	703	2.77	717	3.00	745	3.45	773	3.91	800	4.38	826	4.87	877	5.87
11268	1800	658	1.97	674	2.19	689	2.42	704	2.64	718	2.87	732	3.10	746	3.33	773	3.80	800	4.28	825	4.78	850	5.28	900	6.32
11894	1900	691	2.26	706	2.50	721	2.73	735	2.97	749	3.21	763	3.45	776	3.69	802	4.18	827	4.69	852	5.20	876	5.72	923	6.80
12520	2000	724	2.59	739	2.83	753	3.08	767	3.33	780	3.58	793	3.83	806	4.08	831	4.60	855	5.12	879	5.65	902	6.20	948	7.31
13772	2200	791	3.33	804	3.60	817	3.87	830	4.14	843	4.42	855	4.69	867	4.97	890	5.53	913	6.09	935	6.67	957	7.25	999	8.44
15024	2400	858	4.21	871	4.51	883	4.80	895	5.10	906	5.39	918	5.69	929	5.99	951	6.59	972	7.20	993	7.82	1013	8.44	1053	9.72
16276	2600	926	5.24	937	5.56	949	5.88	960	6.20	971	6.52	981	6.84	992	7.17	1012	7.82	1033	8.47	1052	9.13	1071	9.80	1109	11.15
17528	2800	993	6.44	1004	6.78	1015	7.13	1025	7.47	1036	7.81	1046	8.16	1056	8.51	1075	9.20	1094	9.90	1113	10.61	1131	11.32	1167	12.76
18780	3000	1061	7.81	1071	8.18	1081	8.55	1091	8.92	1101	9.28	1111	9.65	1120	10.02	1138	10.77	1157	11.51	1174	12.26	1192	13.02	1225	14.55
20032	3200	1129	9.37	1139	9.76	1148	10.16	1158	10.55	1167	10.94	1176	11.34	1185	11.73	1203	12.52	1220	13.31	1237	14.11	1253	14.91	1285	16.53
21284	3400	1197	11.13	1206	11.55	1216	11.97	1224	12.39	1233	12.80	1242	13.22	1250	13.64	1267	14.48	1283	15.32	1300	16.16	1315	17.01	1346	18.72
22536	3600	1266	13.11	1274	13.55	1283	13.99	1291	14.43	1300	14.87	1308	15.32	1316	15.76	1332	16.65	1348	17.53	1363	18.43	1378	19.32	1408	21.12
23788	3800	1334	15.31	1342	15.78	1350	16.24	1359	16.71	1366	17.17	1374	17.64	1382	18.11	1397	19.04	1412	19.98	1427	20.92	1442	21.86	1470	23.75
25040	4000	1402	17.75	1410	18.24	1418	18.73	1426	19.22	1434	19.71	1441	20.20	1448	20.70	1463	21.68	1478	22.66	1492	23.65	1506	24.64	1533	26.62

VOL. CFM	OUTLET VEL. FPM	3 S.P.		3.5 S.P.		4 S.P.		4.5 S.P.		5 S.P.		5.5 S.P.		6 S.P.		6.5 S.P.		7 S.P.		7.5 S.P.		8 S.P.		8.5 S.P.	
		RPM	BHP	RPM	BHP	RPM	BHP	RPM	BHP	RPM	BHP	RPM	BHP	RPM	BHP	RPM	BHP	RPM	BHP	RPM	BHP	RPM	BHP	RPM	BHP
8138	1300	863	5.30	—	—	—	—	—	—	—	—	—	—	—	—	—	—	—	—	—	—	—	—	—	—
8764	1400	876	5.66	932	6.66	—	—	—	—	—	—	—	—	—	—	—	—	—	—	—	—	—	—	—	—
9390	1500	891	6.05	944	7.08	996	8.15	—	—	—	—	—	—	—	—	—	—	—	—	—	—	—	—	—	—
10016	1600	908	6.47	959	7.53	1009	8.63	1058	9.77	—	—	—	—	—	—	—	—	—	—	—	—	—	—	—	—
10642	1700	927	6.92	976	8.01	1024	9.15	1071	10.32	1117	11.53	—	—	—	—	—	—	—	—	—	—	—	—	—	—
11268	1800	948	7.40	994	8.53	1040	9.69	1085	10.90	1130	12.14	1173	13.41	—	—	—	—	—	—	—	—	—	—	—	—
11894	1900	969	7.92	1014	9.08	1058	10.27	1102	11.51	1145	12.78	1187	14.08	1228	15.42	—	—	—	—	—	—	—	—	—	—
12520	2000	992	8.47	1035	9.66	1078	10.89	1120	12.16	1161	13.46	1202	14.80	1242	16.17	1281	17.57	—	—	—	—	—	—	—	—
13772	2200	1040	9.67	1081	10.93	1120	12.23	1159	13.57	1198	14.94	1236	16.34	1273	17.77	1310	19.23	1347	20.73	1383	22.25	1419	23.80	1454	25.38
15024	2400	1092	11.02	1130	12.36	1167	13.73	1203	15.14	1240	16.57	1275	18.04	1310	19.54	1345	21.07	1379	22.63	1414	24.21	1447	25.83	1481	27.47
16276	2600	1146	12.54	1181	13.96	1216	15.40	1251	16.88	1285	18.39	1318	19.92	1352	21.49	1384	23.08	1417	24.71	1449	26.36	1481	28.04	1512	29.74
17528	2800	1201	14.23	1235	15.73	1268	17.25	1301	18.80	1333	20.38	1365	21.99	1396	23.62	1427	25.29	1458	26.98	1489	28.70	1519	30.44	—	—
18780	3000	1258	16.10	1291	17.68	1322	19.28	1353	20.91	1384	22.57	1414	24.25	1444	25.96	1473	27.69	1503	29.46	1531	31.24	—	—	—	—
20032	3200	1317	18.17	1348	19.83	1378	21.52	1407	23.23	1436	24.96	1465	26.72	1494	28.50	1522	30.31	—	—	—	—	—	—	—	—
21284	3400	1376	20.44	1406	22.19	1435	23.96	1463	25.75	1491	27.57	1518	29.40	1546	31.26	—	—	—	—	—	—	—	—	—	—
22536	3600	1437	22.94	1465	24.77	1493	26.63	1520	28.50	1547	30.40	—	—	—	—	—	—	—	—	—	—	—	—	—	—
23788	3800	1498	25.66	1525	27.58	—	—	—	—	—	—	—	—	—	—	—	—	—	—	—	—	—	—	—	—

Performance shown is for installation type B—Free inlet, Ducted outlet. Power rating (BHP) does not include drive losses. Performance ratings do not include the effects of appurtenances in the airstream. Data in bold face indicates quietest and most efficient performance.

Class I Blowers
 Class II Blowers





MODEL B
BELT DRIVEN UTILITY VENT SET-BACKWARD INCLINED



Performance B-365

TIP SPEED (FPM) = 9.566 x RPM OUTLET { 7.66 Sq. Ft. Inside
391/4" x 281/2" Outside MAX. HP = 13.01 $\left(\frac{\text{RPM}}{1000}\right)^3$

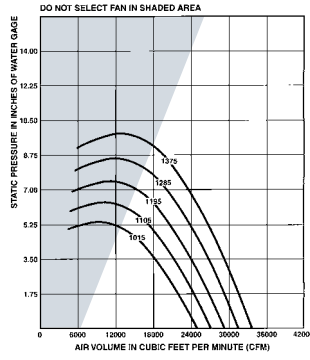
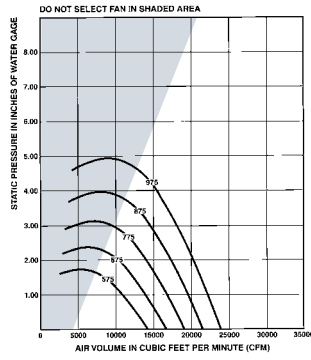
WHEEL DIAMETER—361/2" INLET { 8.11 Sq. Ft. Inside
39" Dia. Outside MAX. RPM
CL.1 1098
CL.2 1431

VOL. CFM	OUTLET VEL. FPM	.25 S.P.		.38 S.P.		.50 S.P.		.63 S.P.		.75 S.P.		.88 S.P.		1 S.P.		1.25 S.P.		1.5 S.P.		1.75 S.P.		2 S.P.		2.5 S.P.	
		RPM	BHP	RPM	BHP	RPM	BHP	RPM	BHP	RPM	BHP	RPM	BHP	RPM	BHP	RPM	BHP	RPM	BHP	RPM	BHP	RPM	BHP	RPM	BHP
6128	800	311	0.41	338	0.55	363	0.69	387	0.83	411	0.99	—	—	—	—	—	—	—	—	—	—	—	—	—	—
6894	900	337	0.51	362	0.66	384	0.81	407	0.97	428	1.13	450	1.30	470	1.48	—	—	—	—	—	—	—	—	—	—
7660	1000	364	0.62	387	0.78	408	0.95	428	1.12	448	1.30	468	1.48	487	1.67	525	2.06	—	—	—	—	—	—	—	—
8426	1100	392	0.76	413	0.93	433	1.11	452	1.29	470	1.48	489	1.67	507	1.87	542	2.28	576	2.72	—	—	—	—	—	—
9192	1200	420	0.92	439	1.10	458	1.29	476	1.49	494	1.69	511	1.89	528	2.10	560	2.54	592	2.99	624	3.46	—	—	—	—
9958	1300	448	1.10	467	1.30	484	1.50	501	1.71	518	1.92	534	2.13	550	2.36	581	2.81	611	3.29	641	3.78	669	4.29	—	—
10724	1400	477	1.30	495	1.52	511	1.73	527	1.95	543	2.18	558	2.41	573	2.64	603	3.12	631	3.61	659	4.13	687	4.66	740	5.76
11490	1500	506	1.53	523	1.76	539	1.99	554	2.23	569	2.46	583	2.70	598	2.95	626	3.45	653	3.97	679	4.51	705	5.06	756	6.20
12256	1600	536	1.79	551	2.04	567	2.28	581	2.53	595	2.78	609	3.03	623	3.29	649	3.82	675	4.36	701	4.92	725	5.49	774	6.68
13022	1700	565	2.09	580	2.34	595	2.60	609	2.86	622	3.13	636	3.40	649	3.67	674	4.22	699	4.78	723	5.36	747	5.96	793	7.19
13788	1800	595	2.41	609	2.68	623	2.96	637	3.23	650	3.51	662	3.79	675	4.07	699	4.65	723	5.24	746	5.84	769	6.46	813	7.73
14554	1900	625	2.77	639	3.06	652	3.34	665	3.63	677	3.93	690	4.22	702	4.52	725	5.12	748	5.73	770	6.36	792	7.00	835	8.32
15320	2000	655	3.17	668	3.47	681	3.77	693	4.07	705	4.38	717	4.69	729	5.00	751	5.63	773	6.27	795	6.92	816	7.58	857	8.95
16852	2200	715	4.08	727	4.41	739	4.74	751	5.07	762	5.41	773	5.74	784	6.08	805	6.76	825	7.45	845	8.16	865	8.87	903	10.33
18384	2400	776	5.16	787	5.52	798	5.88	809	6.24	819	6.60	830	6.97	840	7.33	860	8.07	879	8.82	898	9.57	916	10.34	952	11.89
19916	2600	837	6.42	847	6.81	858	7.20	868	7.59	878	7.98	887	8.38	897	8.77	915	9.56	934	10.37	951	11.17	969	11.99	1003	13.65
21448	2800	898	7.88	908	8.30	918	8.72	927	9.14	936	9.57	946	9.99	955	10.41	972	11.26	989	12.12	1006	12.98	1023	13.85	1055	15.62
22980	3000	960	9.56	969	10.01	978	10.46	987	10.91	996	11.36	1004	11.82	1013	12.27	1029	13.18	1046	14.09	1062	15.01	1077	15.93	1108	17.81
24512	3200	1021	11.47	1030	11.95	1038	12.43	1047	12.91	1055	13.39	1063	13.88	1072	14.36	1087	15.32	1103	16.30	1118	17.27	1133	18.25	1162	20.23
26044	3400	1083	13.63	1091	14.14	1099	14.65	1107	15.16	1115	15.67	1123	16.18	1131	16.69	1146	17.72	1161	18.75	1175	19.78	1189	20.82	1217	22.91
27576	3600	1144	16.05	1152	16.59	1160	17.13	1168	17.67	1175	18.21	1183	18.75	1190	19.29	1205	20.38	1219	21.46	1233	22.55	1246	23.65	1273	25.85
29108	3800	1206	18.74	1214	19.31	1221	19.88	1229	20.45	1236	21.02	1243	21.60	1250	22.17	1264	23.31	1277	24.46	1291	25.60	1304	26.76	1329	29.07
30640	4000	1268	21.73	1275	22.33	1282	22.93	1289	23.53	1296	24.13	1303	24.73	1310	25.33	1323	26.54	1336	27.74	1349	28.95	1362	30.16	1386	32.59
32172	4200	1330	25.02	1337	25.66	1344	26.29	1351	26.92	1357	27.55	1364	28.18	1370	28.81	1383	30.07	1395	31.34	1408	32.60	1420	33.87	—	—

VOL. CFM	OUTLET VEL. FPM	3 S.P.		3.5 S.P.		4 S.P.		4.5 S.P.		5 S.P.		5.5 S.P.		6 S.P.		6.5 S.P.		7 S.P.		7.5 S.P.		8 S.P.		8.5 S.P.	
		RPM	BHP	RPM	BHP	RPM	BHP	RPM	BHP	RPM	BHP	RPM	BHP	RPM	BHP	RPM	BHP	RPM	BHP	RPM	BHP	RPM	BHP	RPM	BHP
9958	1300	—	—	—	—	—	—	—	—	—	—	—	—	—	—	—	—	—	—	—	—	—	—	—	—
10724	1400	—	—	—	—	—	—	—	—	—	—	—	—	—	—	—	—	—	—	—	—	—	—	—	—
11490	1500	806	7.41	—	—	—	—	—	—	—	—	—	—	—	—	—	—	—	—	—	—	—	—	—	—
12256	1600	821	7.92	—	—	—	—	—	—	—	—	—	—	—	—	—	—	—	—	—	—	—	—	—	—
13022	1700	838	8.47	882	9.81	—	—	—	—	—	—	—	—	—	—	—	—	—	—	—	—	—	—	—	—
13788	1800	857	9.06	899	10.44	941	11.86	—	—	—	—	—	—	—	—	—	—	—	—	—	—	—	—	—	—
14554	1900	876	9.69	917	11.11	957	12.57	996	14.08	—	—	—	—	—	—	—	—	—	—	—	—	—	—	—	—
15320	2000	897	10.36	936	11.82	975	13.33	1012	14.88	1050	16.47	—	—	—	—	—	—	—	—	—	—	—	—	—	—
16852	2200	941	11.83	977	13.38	1013	14.97	1048	16.60	1083	18.28	1117	19.99	1151	21.74	1185	23.53	—	—	—	—	—	—	—	—
18384	2400	987	13.49	1021	15.13	1055	16.81	1088	18.52	1121	20.28	1153	22.08	1185	23.91	1216	25.78	1247	27.69	1278	29.63	—	—	—	—
19916	2600	1036	15.35	1068	17.08	1100	18.85	1131	20.66	1162	22.50	1192	24.38	1222	26.29	1252	28.25	1281	30.23	1310	32.25	1339	34.31	1367	36.39
21448	2800	1086	17.41	1117	19.24	1147	21.11	1176	23.01	1205	24.94	1234	26.91	1262	28.91	1291	30.95	1318	33.01	1346	35.12	1373	37.25	1400	39.42
22980	3000	1138	19.71	1167	21.64	1196	23.60	1224	25.59	1251	27.62	1279	29.68	1305	31.77	1332	33.89	1359	36.05	1385	38.23	1411	40.45	—	—
24512	3200	1191	22.24	1218	24.27	1246	26.33	1273	28.42	1299	30.55	1325	32.70	1351	34.88	1376	37.09	1401	39.34	1426	41.61	—	—	—	—
26044	3400	1245	25.02	1271	27.16	1297	29.32	1323	31.52	1348	33.74	1373	35.98	1398	38.26	1422	40.56	—	—	—	—	—	—	—	—
27576	3600	1299	28.07	1325	30.32	1350	32.59	1374	34.88	1398	37.20	1422	39.55	—	—	—	—	—	—	—	—	—	—	—	—
29108	3800	1355	31.40	1379	33.76	1403	36.13	1427	38.53	—	—	—	—	—	—	—	—	—	—	—	—	—	—	—	—
30640	4000	1410	35.03	—	—	—	—	—	—	—	—	—	—	—	—	—	—	—	—	—	—	—	—	—	—

Performance shown is for installation type B—Free inlet, Ducted outlet. Power rating (BHP) does not include drive losses. Performance ratings do not include the effects of appurtenances in the airstream. Data in bold face indicates quietest and most efficient performance.

Class I Blowers
 Class II Blowers

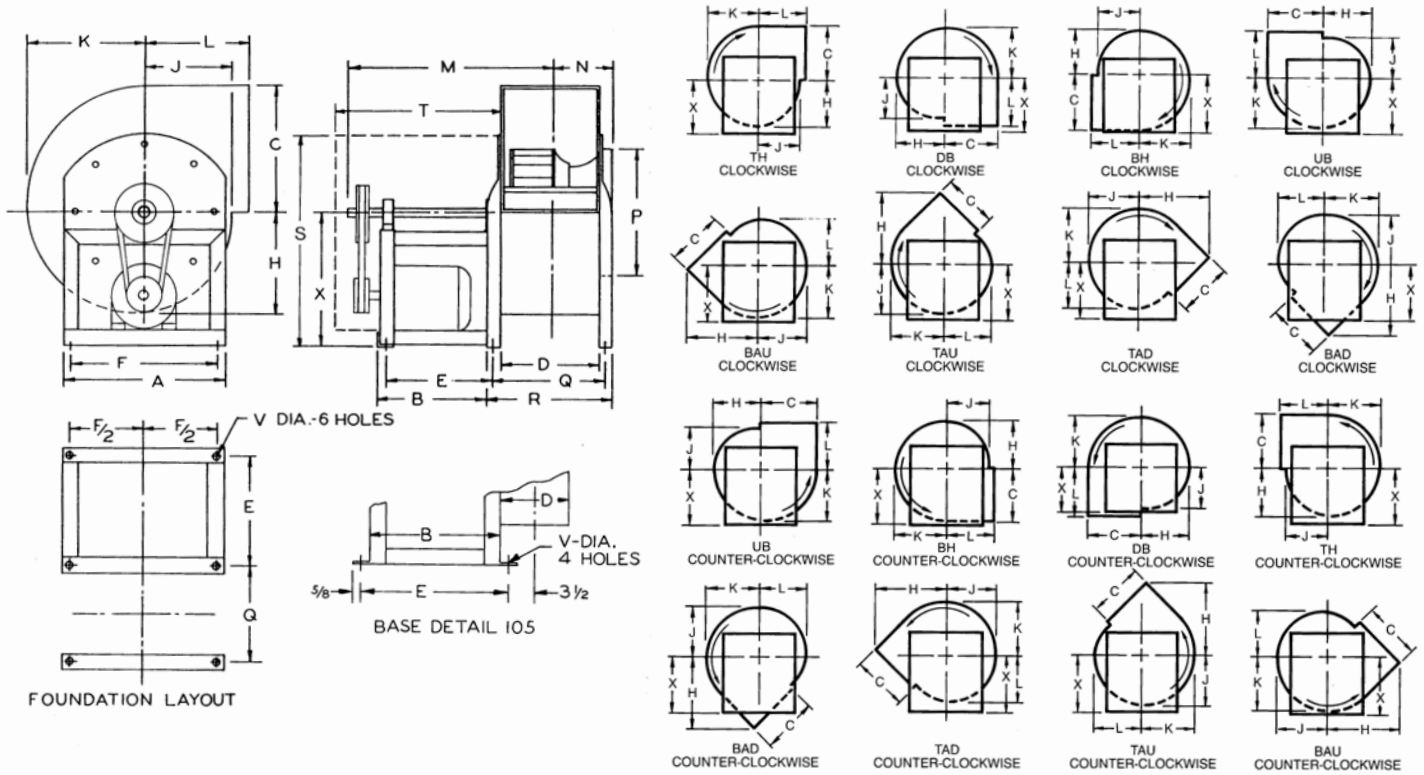




MODEL B
BELT DRIVEN UTILITY VENT SET-BACKWARD INCLINED



Non-Overloading Belt Drive — Arrangement #10 — SWSI — Class 1



SIZE	WHEEL DIA.	SHAFT DIA.	A	B	C*	D	E	F	TH, DB, BH, UB STRAIGHT DISCHARGE				BAU, TAU, TAD, BAD ANGULAR DISCHARGE			
									H	J	K	L	H	J	K	L
105	10 1/2	3/4	12 7/8	13	11 3/4	8	14 1/4	10 3/4	7 7/8	6 3/4	9 1/8	8 1/16	13 1/4	8 7/8	9 5/8	7 1/8
122	12 1/4	1	16 3/8	13 1/2	13 1/4	9 5/8	13 1/2	14 3/4	10 1/8	8 1/2	11 1/2	10 1/2	16 5/8	10 3/4	12 1/2	9 1/8
135	13 1/2	1	17 5/8	13 1/2	14 5/8	10 3/4	13 1/2	16	11 1/8	9 3/8	12 5/8	11 3/8	18 1/4	11 7/8	13 3/4	10
150	15	1	19 1/4	15 1/2	16 1/4	11 3/4	15 1/2	17 5/8	12 3/8	10 3/8	14 1/8	12 3/8	20 1/8	13 1/4	15 1/4	11 1/8
165	16 1/2	1	21 3/8	15	17 3/4	13	15 1/2	19 3/4	13 5/8	11 3/8	15 1/2	13 3/8	21 7/8	14 5/8	16 3/4	12 1/4
182	18 1/4	1 3/16	23 1/8	17	19 5/8	14 1/4	17 1/2	21 1/2	15	12 5/8	17 1/8	14 5/8	24 1/8	16	18 1/2	13 5/8
200	20	1 3/16	25	17	21 1/2	15 7/8	17	23 3/8	16 1/2	13 3/4	18 3/4	15 3/4	26 3/8	17 5/8	20 3/8	14 7/8
222	22 1/4	1 3/16	27 3/8	16 1/2	24	17 3/8	17	25 3/4	18 1/4	15 1/4	20 7/8	17 1/4	29	19 1/2	22 5/8	16 1/2
245	24 1/2	1 7/16	30 1/4	16 1/2	26 1/4	19 1/4	16 3/4	23 5/8	20 1/8	16 7/8	23	19 7/8	32 1/2	21 1/2	24 7/8	18 1/4
270	27	1 7/16	33	16 1/2	29	21 1/4	16 1/2	26 1/4	22 1/8	18 1/2	25 1/4	21 1/2	35 3/8	23 5/8	27 3/8	20
300	30	1 11/16	36 1/4	16 1/2	32 1/4	23 3/8	16 1/2	29 1/2	24 5/8	20 1/2	28 1/8	23 5/8	39 3/8	26 3/8	30 1/2	22 1/2
330	33	1 11/16	39 1/2	21 3/8	35 3/8	25 7/8	21 5/8	33 1/8	27 1/8	22 1/2	30 7/8	25 5/8	43	28 7/8	33 1/2	24 3/8
365	36 1/2	1 15/16	43 1/8	21 3/8	39 1/4	28 1/2	21 5/8	36 7/8	30	24 7/8	34 1/8	28	47 3/8	32	37 1/8	27

NOTE: Letters "C" and "D" are outside housing dimensions.
*C" dimension on 105 extends 11/16" beyond center-line.

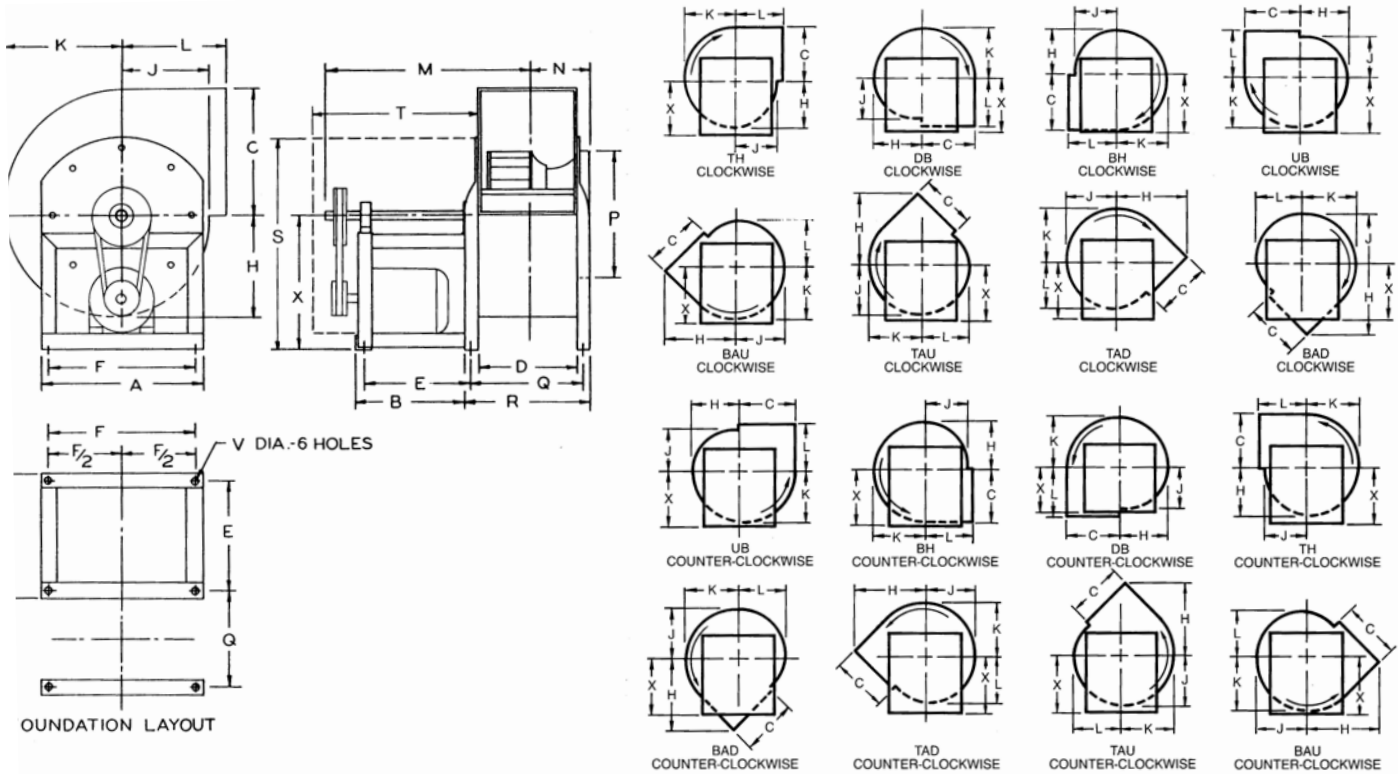
SIZE	M	N	P	Q	R	S	T	V	X	MAX MOTOR FRAME
105	19 5/8	6	12 7/8	—	—	20 1/2	17	7/16	14	145T
122	23 7/8	6 3/8	13 1/4	11 1/4	12 3/4	25 1/4	20	1/2	17	182T
135	24 3/8	7	14 1/2	12 3/8	13 7/8	25 7/8	20	1/2	17	182T
150	26 7/8	7 1/2	16 1/8	13 3/8	14 7/8	27 5/8	22	1/2	17 7/8	182T
165	27 1/2	8 1/2	17 7/8	14 1/2	17	30 1/8	22	1/2	19 1/2	184T
182	30 5/8	9 1/8	19 5/8	15 3/4	18 1/4	33 3/8	25	1/2	21 7/8	184T
200	31 1/2	10	21 1/2	17 7/8	20 1/8	36 1/4	25	1/2	23 3/4	213T
222	32 3/4	10 5/8	23 7/8	19 3/8	22 5/8	39 3/4	26	1/2	26 1/8	213T
245	33 5/8	11 3/4	26 3/8	21 1/4	24 1/2	42 7/8	26	1/2	27 3/4	215T
270	34 5/8	12 5/8	29	23 3/4	26 1/2	47	26	1/2	30 1/2	215T
300	36	13 3/4	32 1/4	26	28 3/4	51 7/8	27	1/2	33 3/4	254T
330	41 3/8	15	35 3/8	28 3/8	31 1/8	58 1/2	30 3/8	7/8	38 3/8	254T
365	43 1/4	16 1/4	39	31	33 3/4	63 3/4	30 3/8	7/8	42 1/8	254T

TEMPERATURE OPERATING LIMITS TEMPERATURE RPM DERATING FACTORS IN PERCENT:	
STEEL WHEEL	ALUMINUM WHEEL
300°F 100%	150°F 100%
301-400°F 96%	151-200°F 95%
401-500°F 92%	201-250°F 80%
501-600°F 85%	





Non-Overloading Belt Drive — Arrangement #10 — SWSI — Class 2



SIZE	WHEEL DIA.	SHAFT DIA.	A	B	C*	D	E	F	TH, DB, BH, UB STRAIGHT DISCHARGE				BAU, TAU, TAD, BAD ANGULAR DISCHARGE			
									H	J	K	L	H	J	K	L
105	10 1/2	1	16 3/8	15	11 3/4	8	13 1/2	14 3/4	7 7/8	6 3/4	9 1/8	8 1/16	13 1/4	8 7/8	9 5/8	7 1/8
122	12 1/4	1 3/16	16 3/8	15 1/2	13 1/4	9 5/8	15 1/2	14 3/4	10 1/8	8 1/2	11 1/2	10 1/2	16 5/8	10 3/4	12 1/2	9 1/8
135	13 1/2	1 3/16	17 5/8	15 1/2	14 5/8	10 3/4	15 1/2	16	11 1/8	9 3/8	12 5/8	11 3/8	18 1/4	11 7/8	13 3/4	10
150	15	1 3/16	19 1/4	15 1/2	16 1/4	11 3/4	15 1/2	17 5/8	12 3/8	10 3/8	14 1/8	12 3/8	20 1/8	13 1/4	15 1/4	11 1/8
165	16 1/2	1 3/16	21 3/8	21	17 3/4	13	21 1/2	19 3/4	13 5/8	11 3/8	15 1/2	13 3/8	21 7/8	14 5/8	16 3/4	12 1/4
182	18 1/4	1 7/16	23 3/8	21	19 5/8	14 1/4	21 1/2	21 1/2	15	12 5/8	17 1/8	14 5/8	24 1/8	16	18 1/2	13 5/8
200	20	1 7/16	25	21	21 1/2	15 7/8	21	23 3/8	16 1/2	13 3/4	18 3/4	15 3/4	26 3/8	17 5/8	20 3/8	14 7/8
222	22 1/4	1 11/16	27 3/8	22 1/2	24	17 3/8	23	25 3/4	18 1/4	15 1/4	20 7/8	17 1/4	29	19 1/2	22 5/8	16 1/2
245	24 1/2	1 11/16	30 1/4	22 1/2	26 1/4	19 1/4	22 3/4	23 5/8	20 1/8	16 7/8	23	19 7/8	32 1/2	21 1/2	24 7/8	18 1/4
270	27	1 11/16	33	21	29	21 1/4	21 1/8	26 1/4	22 1/8	18 1/2	25 1/4	21 1/2	35 3/8	23 5/8	27 3/8	20
300	30	1 15/16	36 1/4	23	32 1/4	23 3/8	23 1/8	29 1/2	24 5/8	20 1/2	28 1/8	23 5/8	39 3/8	26 3/8	30 1/2	22 1/2
330	33	1 15/16	39 1/2	23	35 3/8	25 7/8	23 1/4	33 1/8	27 1/8	22 1/2	30 7/8	25 5/8	43	28 7/8	33 1/2	24 3/8
365	36 1/2	2 3/16	43 1/8	23	39 1/4	28 1/2	23 1/4	36 7/8	30	24 7/8	34 1/8	28	47 3/8	32	37 1/8	27

NOTE: Letters "C" and "D" are outside housing dimensions.

*"C" dimension on 105 extends 11/16" beyond center-line.

SIZE	M	N	P	Q	R	S	T	V	X	MAX MOTOR FRAME
105	22 3/8	6	12 7/8	—	—	25 1/4	20	1/2	17	128T
122	25 3/8	6 3/8	13 1/4	11 1/4	12 3/4	25 1/4	22	1/2	17	184T
135	25 7/8	7	14 1/2	12 3/8	13 7/8	25 7/8	22	1/2	17	184T
150	27	7 1/2	16 1/8	13 3/8	14 7/8	27 5/8	22	1/2	17 7/8	213T
165	34 1/8	8 1/2	17 7/8	14 1/2	17	30 5/8	29	1/2	19 1/2	254T
182	34 3/4	9 1/8	19 5/8	15 3/4	18 1/4	33 3/8	29	1/2	21 7/8	254T
200	35 5/8	10	21 1/2	17 7/8	20 1/8	36 1/4	29	1/2	23 3/4	254T
222	38 3/8	10 5/8	23 7/8	19 3/8	22 5/8	39 1/4	31 1/2	1/2	26 1/8	256T
245	40 1/2	11 3/4	26 3/8	21 1/4	24 1/2	42 7/8	33	1/2	27 3/4	284T
270	39 5/8	12 5/8	29	23 3/4	26 1/2	47	33	1/2	30 1/2	284T
300	42 5/8	13 3/4	32 1/4	26	28 3/4	51 7/8	33	1/2	33 3/4	286T
330	45	15	35 3/8	28 3/8	31 1/8	58 1/8	34	7/8	38 3/8	324T
365	46 1/4	16 1/4	39	31	33 3/4	63 3/4	34	7/8	42 1/8	234T

TEMPERATURE OPERATING LIMITS TEMPERATURE RPM DERATING FACTORS IN PERCENT:	
STEEL WHEEL	ALUMINUM WHEEL
300°F 100%	150°F 100%
301-400°F 96%	151-200°F 95%
401-500°F 92%	201-250°F 80%
501-600°F 85%	





CONSTRUCTION/SPECIFICATIONS

Wheels

Die-formed identical blades machine riveted to die-punched back plate and rim. Dynamically and statically balanced.

Inlet

Circular angle ring. Rigid streamlined inlet.

Frame

All welded steel construction. Easy access to motor for servicing.

Housing

All are convertible and may be rotated easily to any of eight 45° positions.

Motor Base

Heavy construction assures sturdy base for motor mounting and features easy adjustment for belt tension.

Bearings

Self-aligning ball bearing pillow blocks. These bearings are designed to operate under the most severe atmospheric conditions.

Shaft

Ground and polished solid steel key-wayed on each end.

Motor

Commercial standard Fan and Blower duty motors are job-matched to each requirement. All types of current characteristics, enclosures and bearing construction are available.

Adjustable V-Belt Drive

High quality CAST Iron adjustable pitch motor sheaves are standard equipment. V-Belts with ample service factor are also employed. When performance data is specified, the blowers are factory set to exact blower speed to meet job requirements. Constant speed drives are also available.



Performance FCB-8

VOL. CFM	OUTLET VEL. FPM	.25 S.P.		.375 S.P.		.5 S.P.		.625 S.P.		.75 S.P.		.875 S.P.		1.0 S.P.		1.25 S.P.	
		RPM	BHP	RPM	BHP	RPM	BHP	RPM	BHP	RPM	BHP	RPM	BHP	RPM	BHP	RPM	BHP
237	800	758	0.02	909	0.03	—	—	—	—	—	—	—	—	—	—	—	—
266	900	775	0.03	917	0.04	1049	0.05	—	—	—	—	—	—	—	—	—	—
296	1000	798	0.03	931	0.04	1055	0.06	1172	0.07	—	—	—	—	—	—	—	—
326	1100	825	0.04	949	0.05	1067	0.06	1178	0.08	1285	0.09	—	—	—	—	—	—
355	1200	854	0.04	971	0.06	1083	0.07	1189	0.08	1290	0.10	1388	0.12	1482	0.13	—	—
385	1300	886	0.05	997	0.06	1102	0.08	1203	0.09	1300	0.11	1394	0.13	1485	0.14	1657	0.18
414	1400	918	0.06	1024	0.07	1125	0.09	1221	0.10	1314	0.12	1404	0.14	1491	0.15	1658	0.19
444	1500	955	0.07	1055	0.08	1150	0.10	1243	0.11	1331	0.13	1417	0.15	1501	0.17	1662	0.21
474	1600	991	0.08	1088	0.09	1179	0.11	1267	0.13	1352	0.14	1434	0.16	1515	0.18	1670	0.22
503	1700	1027	0.09	1121	0.11	1208	0.12	1293	0.14	1374	0.16	1454	0.18	1531	0.20	1681	0.24
533	1800	1065	0.10	1156	0.12	1240	0.14	1321	0.16	1400	0.17	1476	0.19	1550	0.21	1695	0.25
562	1900	1104	0.12	1191	0.14	1272	0.15	1350	0.17	1426	0.19	1500	0.21	1572	0.23	1712	0.27
592	2000	1144	0.13	1228	0.15	1307	0.17	1382	0.19	1455	0.21	1527	0.23	1596	0.25	1731	0.29
651	2200	1223	0.17	1303	0.19	1377	0.21	1448	0.23	1517	0.25	1583	0.27	1649	0.30	1775	0.34
710	2400	1304	0.21	1380	0.23	1451	0.25	1518	0.28	1583	0.30	1646	0.32	1707	0.35	1827	0.39
770	2600	1388	0.26	1461	0.28	1528	0.31	1592	0.33	1654	0.36	1713	0.38	1771	0.41	1884	0.46
829	2800	1471	0.32	1541	0.34	1606	0.37	1667	0.39	1726	0.42	1783	0.45	1838	0.47	1946	0.53
888	3000	1556	0.38	1623	0.41	1684	0.44	1743	0.46	1800	0.49	1854	0.52	1908	0.55	2011	0.60
947	3200	1640	0.45	1705	0.48	1765	0.51	1822	0.54	1876	0.57	1929	0.60	1980	0.63	2079	0.69
1006	3400	1726	0.53	1789	0.57	1846	0.60	1901	0.63	1954	0.66	2004	0.69	2054	0.72	2149	0.79
1066	3600	1813	0.62	1874	0.66	1930	0.69	1983	0.73	2034	0.76	2083	0.80	2131	0.83	2223	0.90
1125	3800	1900	0.72	1958	0.76	2013	0.80	2064	0.84	2114	0.87	2162	0.91	2207	0.94	2297	1.01
1184	4000	1986	0.83	2043	0.88	2097	0.92	2147	0.95	2195	0.99	2241	1.03	2286	1.07	2371	1.14
1243	4200	2073	0.96	2129	1.00	2181	1.04	2229	1.08	2276	1.12	2321	1.16	2365	1.20	2449	1.28
1302	4400	2162	1.09	2215	1.14	2265	1.18	2312	1.22	2358	1.27	2402	1.31	2445	1.35	2527	1.43
1362	4600	2251	1.24	2303	1.29	2351	1.33	2399	1.38	2443	1.43	2485	1.47	2527	1.51	2606	1.60
1421	4800	2339	1.40	2389	1.45	2437	1.50	2483	1.55	2526	1.59	2567	1.64	2608	1.69	2686	1.78
1480	5000	2428	1.57	2477	1.62	2523	1.67	2568	1.73	2610	1.78	2651	1.82	2690	1.87	2766	1.97
1539	5200	2516	1.76	2565	1.81	2610	1.87	2653	1.92	2695	1.97	2735	2.02	2774	2.07	2847	2.17
1598	5400	2605	1.96	2652	2.02	2696	2.07	2738	2.13	2779	2.18	2818	2.23	2856	2.29	2929	2.39
1658	5600	2695	2.18	2742	2.24	2784	2.30	2826	2.35	2865	2.41	2903	2.46	2941	2.52	—	—
1717	5800	2783	2.40	2830	2.47	2872	2.53	2912	2.59	2951	2.65	2988	2.71	—	—	—	—
1776	6000	2874	2.65	2918	2.72	2959	2.79	2999	2.85	—	—	—	—	—	—	—	—
1835	6200	2963	2.92	3006	2.99	—	—	—	—	—	—	—	—	—	—	—	—

VOL. CFM	OUTLET VEL. FPM	1.50 S.P.		1.75 S.P.		2.0 S.P.		2.5 S.P.		3.0 S.P.		3.5 S.P.		4.0 S.P.	
		RPM	BHP	RPM	BHP	RPM	BHP	RPM	BHP	RPM	BHP	RPM	BHP	RPM	BHP
444	1500	1815	0.25	—	—	—	—	—	—	—	—	—	—	—	—
474	1600	1819	0.27	—	—	—	—	—	—	—	—	—	—	—	—
503	1700	1825	0.28	1963	0.33	—	—	—	—	—	—	—	—	—	—
533	1800	1835	0.30	1969	0.35	2098	0.40	—	—	—	—	—	—	—	—
562	1900	1846	0.32	1977	0.37	2103	0.42	—	—	—	—	—	—	—	—
592	2000	1862	0.34	1988	0.39	2110	0.44	2345	0.55	—	—	—	—	—	—
651	2200	1898	0.39	2017	0.44	2133	0.49	2356	0.61	2569	0.73	—	—	—	—
710	2400	1942	0.45	2055	0.50	2165	0.55	2377	0.67	2580	0.79	2776	0.93	—	—
770	2600	1994	0.51	2100	0.56	2205	0.62	2406	0.74	2600	0.87	2788	1.01	2969	1.15
829	2800	2050	0.58	2151	0.64	2250	0.70	2442	0.82	2628	0.95	2808	1.09	2982	1.24
888	3000	2109	0.66	2206	0.72	2300	0.78	2485	0.91	2662	1.05	2834	1.19	3002	1.34
947	3200	2174	0.75	2266	0.81	2357	0.88	2533	1.01	2703	1.15	2868	1.29	—	—
1006	3400	2241	0.85	2329	0.92	2416	0.98	2585	1.12	2748	1.26	2907	1.41	—	—
1066	3600	2311	0.96	2396	1.03	2480	1.10	2642	1.24	2799	1.39	2952	1.54	—	—
1125	3800	2382	1.08	2464	1.15	2545	1.23	2701	1.37	2853	1.53	3000	1.68	—	—
1184	4000	2455	1.21	2535	1.29	2613	1.36	2764	1.52	2910	1.67	—	—	—	—
1243	4200	2529	1.36	2607	1.43	2682	1.51	2829	1.67	2970	1.84	—	—	—	—
1302	4400	2605	1.51	2680	1.59	2754	1.68	2896	1.84	—	—	—	—	—	—
1362	4600	2683	1.68	2755	1.77	2828	1.85	2966	2.02	—	—	—	—	—	—
1421	4800	2760	1.86	2832	1.95	2901	2.04	—	—	—	—	—	—	—	—
1480	5000	2839	2.06	2909	2.15	2977	2.24	—	—	—	—	—	—	—	—
1539	5200	2919	2.27	2987	2.36	—	—	—	—	—	—	—	—	—	—
1598	5400	2998	2.49	—	—	—	—	—	—	—	—	—	—	—	—



Performance FCB-9

VOL. CFM	OUTLET VEL. FPM	.25 S.P.		.375 S.P.		.5 S.P.		.625 S.P.		.75 S.P.		.875 S.P.		1.0 S.P.		1.25 S.P.	
		RPM	BHP	RPM	BHP	RPM	BHP	RPM	BHP	RPM	BHP	RPM	BHP	RPM	BHP	RPM	BHP
374	800	615	0.03	730	0.04	—	—	—	—	—	—	—	—	—	—	—	—
421	900	635	0.04	741	0.05	841	0.06	—	—	—	—	—	—	—	—	—	—
468	1000	658	0.05	757	0.06	850	0.07	940	0.09	—	—	—	—	—	—	—	—
515	1100	685	0.06	777	0.07	865	0.09	949	0.10	1030	0.12	—	—	—	—	—	—
562	1200	714	0.07	801	0.09	883	0.10	962	0.11	1039	0.13	1113	0.15	1185	0.16	—	—
608	1300	745	0.09	826	0.10	904	0.12	979	0.13	1051	0.15	1122	0.17	1191	0.18	1323	0.22
655	1400	776	0.10	854	0.12	928	0.13	999	0.15	1068	0.17	1135	0.19	1201	0.20	1328	0.24
702	1500	809	0.12	884	0.14	954	0.15	1022	0.17	1087	0.19	1151	0.21	1214	0.23	1336	0.27
749	1600	842	0.14	915	0.16	981	0.18	1046	0.20	1109	0.21	1170	0.23	1230	0.25	1347	0.30
796	1700	877	0.16	946	0.18	1011	0.20	1073	0.22	1133	0.24	1192	0.26	1249	0.28	1361	0.33
842	1800	911	0.19	978	0.21	1041	0.23	1100	0.25	1158	0.27	1214	0.29	1270	0.31	1377	0.36
889	1900	946	0.22	1011	0.24	1072	0.26	1130	0.28	1185	0.30	1239	0.33	1292	0.35	1396	0.39
936	2000	981	0.25	1045	0.27	1104	0.30	1160	0.32	1214	0.34	1266	0.36	1317	0.39	1417	0.43
1030	2200	1053	0.32	1114	0.35	1170	0.37	1223	0.40	1274	0.42	1323	0.45	1371	0.47	1464	0.52
1123	2400	1124	0.40	1184	0.43	1238	0.46	1288	0.49	1336	0.52	1383	0.54	1428	0.57	1516	0.62
1217	2600	1198	0.50	1255	0.53	1307	0.57	1356	0.60	1402	0.63	1446	0.66	1489	0.68	1572	0.74
1310	2800	1271	0.61	1327	0.65	1377	0.68	1424	0.72	1468	0.75	1511	0.78	1552	0.81	1631	0.88
1404	3000	1344	0.74	1399	0.78	1449	0.82	1494	0.86	1537	0.89	1578	0.93	1618	0.96	1694	1.03
1498	3200	1419	0.89	1472	0.93	1521	0.97	1565	1.01	1607	1.05	1646	1.09	1685	1.13	1758	1.20
1591	3400	1493	1.05	1546	1.10	1592	1.14	1636	1.19	1676	1.23	1715	1.27	1752	1.31	1824	1.39
1685	3600	1567	1.23	1619	1.29	1666	1.34	1708	1.38	1748	1.43	1785	1.47	1821	1.51	1891	1.60
1778	3800	1641	1.43	1693	1.49	1738	1.55	1780	1.60	1818	1.64	1855	1.69	1891	1.74	1959	1.83
1872	4000	1716	1.66	1767	1.72	1812	1.78	1853	1.84	1891	1.89	1927	1.94	1962	1.99	2028	2.08
1966	4200	1790	1.90	1842	1.97	1886	2.04	1926	2.10	1963	2.15	1999	2.21	2033	2.26	2098	2.36
2059	4400	1865	2.17	1916	2.25	1959	2.31	1999	2.38	2036	2.44	2071	2.50	2104	2.55	2168	2.66
2153	4600	1940	2.46	1990	2.55	2034	2.62	2073	2.69	2110	2.75	2144	2.81	2177	2.87	2239	2.99
2246	4800	2015	2.78	2064	2.87	2107	2.95	2146	3.02	2183	3.09	2217	3.16	2249	3.22	2310	3.34
2340	5000	2089	3.13	2139	3.22	2181	3.31	2221	3.39	2257	3.46	2290	3.53	2322	3.60	2382	3.73
2434	5200	2165	3.50	2214	3.60	2256	3.69	2295	3.78	2331	3.86	2363	3.93	2395	4.00	2455	4.14
2527	5400	2239	3.90	2289	4.01	2331	4.11	2368	4.19	2403	4.28	2436	4.35	2468	4.43	2527	4.58
2621	5600	2315	4.33	2364	4.45	2406	4.55	2443	4.65	2478	4.74	2511	4.82	2542	4.90	—	—
2714	5800	2389	4.79	2438	4.92	2480	5.02	2517	5.12	—	—	—	—	—	—	—	—
2808	6000	2464	5.28	2513	5.42	—	—	—	—	—	—	—	—	—	—	—	—
2902	6200	2540	5.81	—	—	—	—	—	—	—	—	—	—	—	—	—	—

VOL. CFM	OUTLET VEL. FPM	1.50 S.P.		1.75 S.P.		2.0 S.P.		2.5 S.P.		3.0 S.P.		3.5 S.P.		4.0 S.P.		4.5 S.P.	
		RPM	BHP	RPM	BHP	RPM	BHP	RPM	BHP	RPM	BHP	RPM	BHP	RPM	BHP	RPM	BHP
655	1400	1449	0.28	—	—	—	—	—	—	—	—	—	—	—	—	—	—
702	1500	1453	0.31	1565	0.35	—	—	—	—	—	—	—	—	—	—	—	—
749	1600	1459	0.34	1568	0.38	1673	0.43	—	—	—	—	—	—	—	—	—	—
796	1700	1469	0.37	1574	0.42	1676	0.47	—	—	—	—	—	—	—	—	—	—
842	1800	1481	0.40	1583	0.45	1681	0.50	1870	0.61	—	—	—	—	—	—	—	—
889	1900	1497	0.44	1594	0.49	1690	0.54	1874	0.65	2048	0.77	—	—	—	—	—	—
936	2000	1514	0.48	1608	0.53	1701	0.59	1879	0.70	2049	0.81	—	—	—	—	—	—
1030	2200	1554	0.57	1643	0.63	1729	0.68	1897	0.80	2059	0.92	2215	1.05	—	—	—	—
1123	2400	1600	0.68	1684	0.74	1765	0.80	1924	0.92	2077	1.04	2226	1.18	2370	1.31	—	—
1217	2600	1653	0.80	1731	0.86	1808	0.92	1958	1.05	2103	1.18	2244	1.32	2382	1.46	2516	1.61
1310	2800	1708	0.94	1782	1.00	1855	1.07	1997	1.20	2135	1.34	2270	1.48	2402	1.63	2530	1.78
1404	3000	1767	1.10	1838	1.16	1907	1.23	2043	1.37	2174	1.52	2302	1.67	2428	1.82	—	—
1498	3200	1829	1.27	1897	1.34	1963	1.42	2092	1.56	2217	1.71	2340	1.87	2460	2.03	—	—
1591	3400	1891	1.46	1957	1.54	2021	1.62	2145	1.77	2265	1.93	2382	2.09	2497	2.26	—	—
1685	3600	1957	1.68	2020	1.76	2082	1.84	2201	2.01	2316	2.17	2429	2.34	2539	2.51	—	—
1778	3800	2022	1.91	2084	2.00	2144	2.09	2259	2.26	2370	2.43	2479	2.61	—	—	—	—
1872	4000	2090	2.18	2150	2.27	2208	2.36	2320	2.54	2427	2.72	2532	2.90	—	—	—	—
1966	4200	2158	2.46	2217	2.56	2274	2.65	2382	2.84	2486	3.03	—	—	—	—	—	—
2059	4400	2227	2.76	2285	2.87	2339	2.97	2445	3.17	2546	3.37	—	—	—	—	—	—
2153	4600	2298	3.10	2354	3.21	2407	3.32	2510	3.53	—	—	—	—	—	—	—	—
2246	4800	2368	3.46	2422	3.57	2475	3.69	—	—	—	—	—	—	—	—	—	—
2340	5000	2439	3.85	2492	3.97	2544	4.09	—	—	—	—	—	—	—	—	—	—
2434	5200	2510	4.27	—	—	—	—	—	—	—	—	—	—	—	—	—	—



Performance FCB-11

VOL. CFM	OUTLET VEL. FPM	.25 S.P.		.375 S.P.		.5 S.P.		.625 S.P.		.75 S.P.		.875 S.P.		1.0 S.P.		1.25 S.P.	
		RPM	BHP	RPM	BHP	RPM	BHP	RPM	BHP	RPM	BHP	RPM	BHP	RPM	BHP	RPM	BHP
509	800	522	0.04	621	0.06	—	—	—	—	—	—	—	—	—	—	—	—
572	900	538	0.05	630	0.07	716	0.08	—	—	—	—	—	—	—	—	—	—
636	1000	558	0.06	642	0.08	723	0.10	801	0.12	—	—	—	—	—	—	—	—
700	1100	580	0.07	659	0.09	734	0.11	807	0.13	877	0.15	—	—	—	—	—	—
763	1200	603	0.09	678	0.11	749	0.13	817	0.15	884	0.17	948	0.20	—	—	—	—
827	1300	629	0.11	699	0.13	766	0.15	830	0.17	894	0.19	955	0.22	1014	0.24	—	—
890	1400	655	0.12	722	0.15	785	0.17	846	0.19	906	0.22	965	0.24	1022	0.27	1131	0.32
954	1500	683	0.15	746	0.17	807	0.19	865	0.22	922	0.24	977	0.27	1032	0.30	1137	0.35
1018	1600	711	0.17	772	0.20	830	0.22	885	0.25	939	0.27	992	0.30	1044	0.33	1145	0.39
1081	1700	739	0.20	798	0.22	854	0.25	907	0.28	959	0.31	1009	0.33	1059	0.36	1156	0.42
1145	1800	769	0.23	826	0.26	879	0.29	930	0.31	980	0.34	1028	0.37	1076	0.40	1169	0.46
1208	1900	798	0.26	853	0.29	905	0.32	954	0.35	1002	0.38	1049	0.41	1094	0.44	1184	0.51
1272	2000	828	0.30	882	0.33	932	0.36	980	0.39	1026	0.42	1071	0.46	1115	0.49	1201	0.55
1399	2200	889	0.38	940	0.42	987	0.45	1032	0.49	1075	0.52	1117	0.56	1159	0.59	1239	0.66
1526	2400	950	0.48	999	0.52	1044	0.56	1087	0.60	1128	0.63	1168	0.67	1206	0.71	1282	0.78
1654	2600	1012	0.60	1060	0.64	1103	0.68	1144	0.72	1183	0.76	1221	0.80	1257	0.84	1329	0.93
1781	2800	1075	0.73	1121	0.78	1163	0.82	1202	0.87	1239	0.91	1275	0.96	1310	1.00	1378	1.09
1908	3000	1138	0.88	1182	0.93	1223	0.98	1261	1.03	1297	1.08	1332	1.13	1365	1.17	1430	1.27
2035	3200	1201	1.05	1244	1.11	1284	1.16	1321	1.22	1355	1.27	1389	1.32	1421	1.37	1484	1.47
2162	3400	1265	1.24	1307	1.31	1345	1.37	1381	1.42	1415	1.48	1447	1.53	1479	1.59	1539	1.69
2290	3600	1329	1.46	1370	1.53	1408	1.59	1443	1.66	1475	1.71	1507	1.77	1537	1.83	1595	1.94
2417	3800	1393	1.70	1434	1.78	1470	1.84	1504	1.91	1536	1.97	1567	2.03	1596	2.10	1653	2.22
2544	4000	1457	1.97	1497	2.04	1533	2.12	1566	2.19	1597	2.26	1627	2.32	1656	2.39	1711	2.52
2671	4200	1522	2.26	1561	2.34	1596	2.42	1628	2.50	1659	2.57	1688	2.64	1716	2.71	1770	2.85
2798	4400	1586	2.58	1624	2.67	1659	2.75	1691	2.83	1721	2.91	1750	2.99	1777	3.06	1830	3.20
2926	4600	1651	2.92	1689	3.02	1723	3.11	1754	3.20	1784	3.28	1812	3.36	1839	3.44	1890	3.59
3053	4800	1716	3.30	1753	3.41	1786	3.50	1817	3.60	1846	3.68	1874	3.77	1900	3.85	1951	4.01
3180	5000	1781	3.71	1817	3.83	1850	3.93	1881	4.02	1909	4.12	1936	4.21	1962	4.29	2012	4.46
3307	5200	1846	4.16	1882	4.27	1914	4.38	1944	4.49	1972	4.58	1999	4.68	2025	4.77	2073	4.95
3434	5400	1911	4.63	1946	4.76	1978	4.87	2008	4.98	2035	5.08	2062	5.18	2087	5.28	2135	5.47
3566	5600	1979	5.17	2014	5.30	2045	5.42	2074	5.53	2101	5.64	2127	5.75	2152	5.85	—	—
3689	5800	2043	5.70	2076	5.84	2107	5.97	2136	6.09	—	—	—	—	—	—	—	—
3816	6000	2108	6.29	2141	6.43	—	—	—	—	—	—	—	—	—	—	—	—

VOL. CFM	OUTLET VEL. FPM	1.50 S.P.		1.75 S.P.		2.0 S.P.		2.5 S.P.		3.0 S.P.		3.5 S.P.		4.0 S.P.		4.5 S.P.	
		RPM	BHP	RPM	BHP	RPM	BHP	RPM	BHP	RPM	BHP	RPM	BHP	RPM	BHP	RPM	BHP
954	1500	1238	0.42	—	—	—	—	—	—	—	—	—	—	—	—	—	—
1018	1600	1243	0.45	1337	0.52	—	—	—	—	—	—	—	—	—	—	—	—
1081	1700	1250	0.49	1341	0.56	1429	0.63	—	—	—	—	—	—	—	—	—	—
1145	1800	1259	0.53	1347	0.60	1433	0.67	—	—	—	—	—	—	—	—	—	—
1208	1900	1271	0.57	1356	0.65	1438	0.72	1597	0.87	—	—	—	—	—	—	—	—
1272	2000	1284	0.62	1366	0.70	1446	0.77	1601	0.93	—	—	—	—	—	—	—	—
1399	2200	1317	0.73	1393	0.81	1468	0.89	1614	1.05	1754	1.23	—	—	—	—	—	—
1526	2400	1355	0.86	1426	0.94	1497	1.02	1634	1.20	1767	1.38	1896	1.57	—	—	—	—
1654	2600	1398	1.01	1465	1.09	1531	1.18	1661	1.36	1787	1.55	1910	1.74	2029	1.95	—	—
1781	2800	1444	1.17	1508	1.26	1570	1.35	1693	1.54	1813	1.74	1929	1.94	2043	2.15	2154	2.37
1908	3000	1493	1.36	1553	1.45	1613	1.55	1730	1.75	1843	1.95	1954	2.16	2063	2.38	—	—
2035	3200	1544	1.57	1602	1.67	1659	1.77	1770	1.97	1878	2.19	1984	2.40	2088	2.63	—	—
2162	3400	1596	1.80	1653	1.90	1707	2.01	1814	2.23	1917	2.44	2019	2.67	2118	2.91	—	—
2290	3600	1651	2.05	1705	2.17	1758	2.28	1860	2.50	1959	2.73	2057	2.97	2152	3.21	—	—
2417	3800	1707	2.33	1759	2.45	1810	2.57	1909	2.81	2004	3.05	2097	3.29	—	—	—	—
2544	4000	1764	2.64	1814	2.77	1864	2.89	1959	3.14	2051	3.39	2141	3.64	—	—	—	—
2671	4200	1821	2.98	1870	3.11	1919	3.24	2011	3.50	2100	3.76	—	—	—	—	—	—
2798	4400	1880	3.34	1928	3.48	1974	3.62	2064	3.89	2150	4.16	—	—	—	—	—	—
2926	4600	1939	3.74	1986	3.89	2032	4.03	2119	4.31	—	—	—	—	—	—	—	—
3053	4800	1999	4.17	2044	4.32	2089	4.47	—	—	—	—	—	—	—	—	—	—
3180	5000	2059	4.63	2104	4.79	2147	4.94	—	—	—	—	—	—	—	—	—	—
3307	5200	2119	5.12	—	—	—	—	—	—	—	—	—	—	—	—	—	—



Performance FCB-12

VOL. CFM	OUTLET VEL. FPM	.25 S.P.		.375 S.P.		.5 S.P.		.625 S.P.		.75 S.P.		.875 S.P.		1.0 S.P.		1.25 S.P.	
		RPM	BHP	RPM	BHP	RPM	BHP	RPM	BHP	RPM	BHP	RPM	BHP	RPM	BHP	RPM	BHP
686	800	431	0.06	513	0.08	—	—	—	—	—	—	—	—	—	—	—	—
772	900	446	0.07	519	0.09	—	—	—	—	—	—	—	—	—	—	—	—
858	1000	464	0.08	531	0.11	596	0.13	—	—	—	—	—	—	—	—	—	—
944	1100	485	0.10	546	0.13	606	0.15	665	0.18	—	—	—	—	—	—	—	—
1030	1200	508	0.12	564	0.15	619	0.17	674	0.20	728	0.23	—	—	—	—	—	—
1115	1300	531	0.15	584	0.17	635	0.20	686	0.23	737	0.26	787	0.29	—	—	—	—
1201	1400	555	0.18	606	0.20	654	0.23	701	0.26	748	0.29	795	0.33	842	0.36	—	—
1287	1500	581	0.21	628	0.24	674	0.27	719	0.30	763	0.33	807	0.37	850	0.40	938	0.48
1373	1600	606	0.24	652	0.28	696	0.31	738	0.34	779	0.37	821	0.41	862	0.45	944	0.52
1459	1700	633	0.29	677	0.32	718	0.35	758	0.39	798	0.42	837	0.46	876	0.50	953	0.57
1544	1800	659	0.33	702	0.36	742	0.40	780	0.44	818	0.47	855	0.51	892	0.55	965	0.63
1630	1900	686	0.38	727	0.42	766	0.45	803	0.49	839	0.53	874	0.57	909	0.61	979	0.69
1716	2000	713	0.43	753	0.47	790	0.51	826	0.55	861	0.59	895	0.63	928	0.67	995	0.76
1888	2200	767	0.56	806	0.60	841	0.65	875	0.69	907	0.73	939	0.78	970	0.82	1031	0.91
2059	2400	822	0.70	860	0.75	893	0.80	925	0.85	956	0.90	985	0.94	1014	0.99	1071	1.09
2231	2600	878	0.87	914	0.93	946	0.98	977	1.04	1006	1.09	1034	1.14	1062	1.19	1115	1.29
2402	2800	934	1.07	969	1.13	1000	1.19	1029	1.25	1057	1.30	1084	1.36	1111	1.41	1161	1.52
2574	3000	990	1.29	1024	1.36	1054	1.43	1083	1.49	1110	1.55	1136	1.61	1161	1.67	1210	1.79
2746	3200	1046	1.55	1080	1.63	1110	1.70	1137	1.76	1163	1.83	1188	1.89	1213	1.96	1259	2.08
2917	3400	1103	1.84	1135	1.92	1164	2.00	1192	2.07	1217	2.14	1241	2.21	1265	2.28	1310	2.41
3089	3600	1160	2.16	1192	2.25	1220	2.33	1247	2.41	1271	2.49	1295	2.56	1318	2.63	1361	2.78
3260	3800	1216	2.51	1247	2.61	1276	2.70	1302	2.79	1326	2.87	1349	2.95	1371	3.03	1413	3.18
3432	4000	1273	2.91	1304	3.01	1332	3.11	1357	3.20	1381	3.29	1404	3.38	1425	3.46	1467	3.62
3603	4200	1330	3.34	1361	3.46	1388	3.56	1413	3.66	1436	3.75	1458	3.84	1480	3.93	1520	4.11
3775	4400	1387	3.81	1417	3.94	1444	4.05	1469	4.16	1492	4.26	1513	4.36	1534	4.45	1574	4.64
3947	4600	1445	4.33	1474	4.47	1501	4.59	1525	4.70	1548	4.81	1569	4.91	1589	5.02	1628	5.21
4118	4800	1502	4.89	1531	5.04	1557	5.17	1581	5.29	1603	5.40	1624	5.51	1644	5.62	1682	5.83
4290	5000	1559	5.51	1588	5.66	1614	5.80	1637	5.93	1659	6.05	1680	6.17	1700	6.28	1738	6.50
4462	5200	1617	6.17	1645	6.33	1671	6.48	1694	6.61	1716	6.74	1736	6.87	1756	6.99	1793	7.22
4633	5400	1674	6.88	1702	7.05	1727	7.20	1750	7.35	1772	7.49	1792	7.62	1811	7.75	1848	7.99
4805	5600	1732	7.64	1760	7.82	1784	7.99	1807	8.14	1828	8.29	1848	8.43	1868	8.56	—	—
4976	5800	1789	8.46	1817	8.65	1841	8.82	1864	8.99	—	—	—	—	—	—	—	—
5148	6000	1847	9.33	—	—	—	—	—	—	—	—	—	—	—	—	—	—

VOL. CFM	OUTLET VEL. FPM	1.50 S.P.		1.75 S.P.		2.0 S.P.		2.5 S.P.		3.0 S.P.		3.5 S.P.		4.0 S.P.		4.5 S.P.	
		RPM	BHP	RPM	BHP	RPM	BHP	RPM	BHP	RPM	BHP	RPM	BHP	RPM	BHP	RPM	BHP
1373	1600	1026	0.61	—	—	—	—	—	—	—	—	—	—	—	—	—	—
1459	1700	1030	0.66	—	—	—	—	—	—	—	—	—	—	—	—	—	—
1544	1800	1038	0.72	1111	0.81	—	—	—	—	—	—	—	—	—	—	—	—
1630	1900	1048	0.78	1117	0.87	1186	0.97	—	—	—	—	—	—	—	—	—	—
1716	2000	1061	0.85	1127	0.94	1192	1.04	—	—	—	—	—	—	—	—	—	—
1888	2200	1091	1.00	1151	1.10	1211	1.21	1331	1.43	—	—	—	—	—	—	—	—
2059	2400	1127	1.19	1183	1.29	1238	1.39	1347	1.62	1457	1.86	—	—	—	—	—	—
2231	2600	1168	1.40	1219	1.50	1270	1.61	1372	1.85	1473	2.09	1574	2.36	—	—	—	—
2402	2800	1211	1.63	1259	1.75	1307	1.86	1402	2.10	1496	2.36	1590	2.63	1684	2.91	1777	3.21
2574	3000	1257	1.90	1303	2.02	1348	2.14	1437	2.39	1525	2.66	1613	2.93	1701	3.22	1788	3.52
2746	3200	1304	2.21	1348	2.33	1391	2.46	1475	2.72	1559	2.99	1641	3.27	1724	3.57	1806	3.88
2917	3400	1353	2.54	1395	2.68	1436	2.81	1517	3.08	1595	3.36	1674	3.65	1751	3.96	1829	4.27
3089	3600	1403	2.92	1444	3.06	1483	3.20	1560	3.48	1635	3.78	1710	4.08	1783	4.39	1857	4.71
3260	3800	1454	3.33	1493	3.48	1531	3.63	1605	3.92	1677	4.23	1748	4.54	1819	4.86	—	—
3432	4000	1506	3.78	1544	3.94	1581	4.10	1652	4.41	1721	4.72	1789	5.05	1857	5.38	—	—
3603	4200	1558	4.28	1595	4.44	1631	4.61	1700	4.93	1767	5.26	1832	5.60	—	—	—	—
3775	4400	1611	4.82	1647	4.99	1682	5.16	1749	5.51	1814	5.85	—	—	—	—	—	—
3947	4600	1665	5.40	1700	5.58	1734	5.76	1799	6.13	1862	6.48	—	—	—	—	—	—
4118	4800	1719	6.03	1753	6.22	1786	6.41	1850	6.79	—	—	—	—	—	—	—	—
4290	5000	1773	6.71	1807	6.91	1839	7.12	—	—	—	—	—	—	—	—	—	—
4462	5200	1828	7.44	1861	7.66	—	—	—	—	—	—	—	—	—	—	—	—



Performance FCB-13

VOL. CFM	OUTLET VEL. FPM	.25 S.P.		.375 S.P.		.5 S.P.		.625 S.P.		.75 S.P.		.875 S.P.		1.0 S.P.		1.25 S.P.	
		RPM	BHP	RPM	BHP	RPM	BHP	RPM	BHP	RPM	BHP	RPM	BHP	RPM	BHP	RPM	BHP
839	800	392	0.07	—	—	—	—	—	—	—	—	—	—	—	—	—	—
944	900	403	0.08	474	0.11	—	—	—	—	—	—	—	—	—	—	—	—
1049	1000	418	0.10	482	0.13	546	0.16	—	—	—	—	—	—	—	—	—	—
1154	1100	435	0.12	493	0.15	551	0.19	610	0.22	—	—	—	—	—	—	—	—
1259	1200	454	0.15	508	0.18	561	0.21	614	0.25	668	0.29	—	—	—	—	—	—
1364	1300	474	0.17	524	0.21	573	0.24	623	0.28	672	0.32	721	0.37	—	—	—	—
1469	1400	495	0.21	542	0.24	588	0.28	634	0.32	680	0.36	725	0.41	771	0.46	—	—
1574	1500	516	0.24	562	0.28	605	0.32	648	0.36	690	0.40	733	0.45	776	0.50	—	—
1678	1600	539	0.28	582	0.32	623	0.36	663	0.40	703	0.45	743	0.50	783	0.55	863	0.66
1783	1700	561	0.33	603	0.37	642	0.41	680	0.46	718	0.50	756	0.55	793	0.60	869	0.71
1888	1800	584	0.38	624	0.42	662	0.47	698	0.51	734	0.56	770	0.61	806	0.66	877	0.77
1993	1900	607	0.43	646	0.48	683	0.53	718	0.57	752	0.62	786	0.67	820	0.73	887	0.84
2098	2000	631	0.49	669	0.54	704	0.59	738	0.64	770	0.69	803	0.75	835	0.80	899	0.91
2308	2200	679	0.64	715	0.69	748	0.74	779	0.80	810	0.85	840	0.91	869	0.97	928	1.08
2518	2400	727	0.80	761	0.86	793	0.92	823	0.98	851	1.04	880	1.10	907	1.16	961	1.28
2727	2600	775	0.99	808	1.06	839	1.13	867	1.19	894	1.25	921	1.32	947	1.38	998	1.51
2937	2800	824	1.22	856	1.29	886	1.36	913	1.43	939	1.50	964	1.57	989	1.64	1037	1.78
3147	3000	873	1.47	905	1.55	933	1.63	959	1.71	985	1.78	1009	1.86	1033	1.93	1078	2.08
3357	3200	923	1.76	953	1.85	981	1.93	1006	2.02	1031	2.10	1054	2.18	1077	2.25	1121	2.41
3567	3400	972	2.08	1002	2.18	1029	2.28	1054	2.36	1078	2.45	1100	2.53	1122	2.62	1165	2.79
3776	3600	1022	2.44	1051	2.55	1077	2.65	1102	2.75	1125	2.84	1147	2.93	1168	3.02	1209	3.20
3986	3800	1071	2.85	1100	2.96	1126	3.07	1150	3.18	1173	3.27	1194	3.37	1215	3.47	1254	3.66
4196	4000	1121	3.29	1150	3.42	1175	3.54	1199	3.65	1221	3.75	1242	3.86	1262	3.96	1300	4.16
4406	4200	1171	3.78	1199	3.92	1224	4.04	1247	4.16	1269	4.28	1289	4.39	1309	4.50	1347	4.71
4616	4400	1221	4.32	1249	4.47	1274	4.60	1296	4.73	1317	4.85	1338	4.97	1357	5.08	1394	5.30
4825	4600	1271	4.90	1299	5.06	1323	5.20	1345	5.34	1366	5.47	1386	5.59	1405	5.71	1441	5.95
5035	4800	1322	5.54	1348	5.71	1372	5.86	1394	6.00	1415	6.14	1434	6.27	1453	6.40	1488	6.65
5245	5000	1372	6.23	1398	6.41	1422	6.57	1444	6.72	1464	6.87	1483	7.01	1502	7.15	1536	7.41
5455	5200	1422	6.98	1448	7.17	1472	7.34	1493	7.50	1513	7.66	1532	7.80	1550	7.95	1585	8.23
5665	5400	1473	7.78	1499	7.98	1522	8.16	1543	8.34	1563	8.50	1581	8.66	1599	8.81	1633	9.10
5874	5600	1523	8.64	1549	8.85	1571	9.05	1592	9.23	1612	9.40	1630	9.57	1648	9.73	1681	10.03
6084	5800	1573	9.56	1599	9.79	1621	10.00	1642	10.19	1661	10.37	1680	10.54	1697	10.71	—	—
6294	6000	1624	10.55	1649	10.79	1671	11.01	1692	11.21	—	—	—	—	—	—	—	—
6504	6200	1674	11.61	—	—	—	—	—	—	—	—	—	—	—	—	—	—

VOL. CFM	OUTLET VEL. FPM	1.50 S.P.		1.75 S.P.		2.0 S.P.		2.5 S.P.		3.0 S.P.		3.5 S.P.		4.0 S.P.		4.5 S.P.	
		RPM	BHP	RPM	BHP	RPM	BHP	RPM	BHP	RPM	BHP	RPM	BHP	RPM	BHP	RPM	BHP
1783	1700	944	0.83	—	—	—	—	—	—	—	—	—	—	—	—	—	—
1888	1800	948	0.89	—	—	—	—	—	—	—	—	—	—	—	—	—	—
1993	1900	954	0.96	1022	1.09	—	—	—	—	—	—	—	—	—	—	—	—
2098	2000	963	1.04	1027	1.17	1091	1.31	—	—	—	—	—	—	—	—	—	—
2308	2200	986	1.21	1044	1.34	1103	1.48	1219	1.79	—	—	—	—	—	—	—	—
2518	2400	1015	1.41	1068	1.55	1122	1.69	1228	2.00	1335	2.34	—	—	—	—	—	—
2727	2600	1048	1.65	1097	1.79	1147	1.94	1245	2.25	1344	2.59	1442	2.96	—	—	—	—
2937	2800	1084	1.92	1130	2.07	1176	2.22	1268	2.54	1359	2.88	1451	3.26	1543	3.65	—	—
3147	3000	1123	2.23	1166	2.38	1210	2.54	1295	2.87	1381	3.22	1466	3.59	1551	3.99	1637	4.41
3357	3200	1163	2.57	1205	2.73	1246	2.89	1326	3.23	1407	3.59	1487	3.97	1567	4.37	1647	4.80
3567	3400	1205	2.95	1245	3.12	1284	3.29	1361	3.64	1436	4.01	1512	4.40	1587	4.80	1662	5.23
3776	3600	1248	3.37	1286	3.55	1324	3.73	1397	4.09	1469	4.47	1540	4.87	1611	5.28	1682	5.72
3986	3800	1292	3.84	1329	4.03	1365	4.21	1435	4.59	1504	4.98	1572	5.39	1639	5.81	—	—
4196	4000	1337	4.35	1373	4.55	1407	4.74	1475	5.14	1541	5.55	1606	5.96	1670	6.40	—	—
4406	4200	1383	4.91	1417	5.12	1451	5.32	1516	5.74	1579	6.16	1642	6.59	—	—	—	—
4616	4400	1429	5.52	1463	5.74	1495	5.96	1558	6.38	1619	6.82	1680	7.27	—	—	—	—
4825	4600	1475	6.18	1508	6.41	1540	6.63	1601	7.08	1660	7.54	—	—	—	—	—	—
5035	4800	1522	6.89	1554	7.14	1585	7.37	1645	7.84	—	—	—	—	—	—	—	—
5245	5000	1569	7.67	1601	7.92	1631	8.16	1689	8.65	—	—	—	—	—	—	—	—
5455	5200	1617	8.49	1648	8.76	1677	9.02	—	—	—	—	—	—	—	—	—	—
5665	5400	1665	9.38	1695	9.66	—	—	—	—	—	—	—	—	—	—	—	—



Performance FCB-15

VOL. CFM	OUTLET VEL. FPM	.25 S.P.		.375 S.P.		.5 S.P.		.625 S.P.		.75 S.P.		.875 S.P.		1.0 S.P.		1.25 S.P.	
		RPM	BHP	RPM	BHP	RPM	BHP	RPM	BHP	RPM	BHP	RPM	BHP	RPM	BHP	RPM	BHP
1024	800	346	0.07	409	0.10	—	—	—	—	—	—	—	—	—	—	—	—
1152	900	359	0.09	415	0.12	471	0.15	—	—	—	—	—	—	—	—	—	—
1280	1000	375	0.11	426	0.14	476	0.17	527	0.21	—	—	—	—	—	—	—	—
1408	1100	393	0.14	439	0.17	485	0.20	531	0.24	577	0.28	—	—	—	—	—	—
1536	1200	412	0.17	455	0.20	497	0.23	539	0.27	582	0.31	624	0.35	—	—	—	—
1664	1300	432	0.20	473	0.23	512	0.27	551	0.31	590	0.35	628	0.39	667	0.44	—	—
1792	1400	453	0.24	491	0.27	528	0.31	564	0.35	600	0.39	636	0.44	672	0.49	745	0.59
1920	1500	474	0.28	511	0.32	546	0.36	580	0.40	613	0.44	647	0.49	681	0.54	748	0.64
2048	1600	496	0.33	531	0.37	564	0.41	596	0.46	628	0.50	660	0.55	691	0.60	754	0.70
2176	1700	518	0.39	552	0.43	583	0.47	614	0.52	644	0.56	674	0.61	704	0.66	763	0.77
2304	1800	540	0.45	573	0.49	603	0.54	633	0.59	662	0.63	690	0.68	718	0.73	774	0.84
2432	1900	562	0.51	594	0.56	624	0.61	652	0.66	680	0.71	707	0.76	734	0.81	787	0.92
2560	2000	585	0.59	616	0.64	645	0.69	672	0.74	699	0.79	725	0.85	750	0.90	801	1.02
2816	2200	630	0.76	660	0.82	687	0.87	713	0.93	738	0.99	762	1.04	786	1.10	833	1.22
3072	2400	676	0.96	705	1.02	731	1.09	756	1.15	779	1.21	802	1.27	824	1.33	868	1.46
3328	2600	722	1.19	750	1.26	775	1.33	799	1.40	821	1.47	843	1.53	864	1.60	905	1.74
3584	2800	768	1.46	795	1.54	820	1.62	843	1.69	865	1.76	885	1.83	906	1.91	945	2.05
3840	3000	814	1.76	841	1.86	865	1.94	888	2.02	909	2.10	929	2.18	948	2.25	985	2.41
4096	3200	861	2.11	888	2.21	911	2.30	933	2.39	953	2.48	972	2.56	991	2.65	1027	2.81
4352	3400	908	2.51	934	2.61	957	2.71	978	2.81	998	2.90	1017	2.99	1035	3.08	1070	3.26
4608	3600	954	2.94	980	3.06	1003	3.17	1024	3.28	1043	3.37	1061	3.47	1079	3.57	1113	3.76
4864	3800	1001	3.43	1027	3.56	1049	3.68	1069	3.79	1088	3.90	1107	4.00	1124	4.10	1157	4.30
5120	4000	1048	3.97	1073	4.11	1095	4.24	1115	4.36	1134	4.47	1152	4.59	1169	4.69	1201	4.91
5376	4200	1095	4.56	1120	4.72	1142	4.85	1162	4.98	1180	5.10	1198	5.22	1214	5.34	1246	5.57
5632	4400	1142	5.21	1167	5.38	1188	5.53	1208	5.66	1226	5.79	1243	5.92	1260	6.05	1291	6.28
5888	4600	1189	5.92	1214	6.10	1235	6.26	1254	6.40	1272	6.54	1289	6.68	1305	6.81	1336	7.07
6144	4800	1236	6.70	1261	6.88	1282	7.05	1301	7.21	1319	7.36	1335	7.50	1351	7.64	1381	7.91
6400	5000	1283	7.53	1308	7.73	1328	7.91	1347	8.08	1365	8.24	1381	8.39	1397	8.54	—	—
6656	5200	1331	8.43	1354	8.65	1375	8.84	1394	9.02	—	—	—	—	—	—	—	—
6912	5400	1378	9.41	—	—	—	—	—	—	—	—	—	—	—	—	—	—

VOL. CFM	OUTLET VEL. FPM	1.50 S.P.		1.75 S.P.		2.0 S.P.		2.5 S.P.		3.0 S.P.		3.5 S.P.		4.0 S.P.	
		RPM	BHP	RPM	BHP	RPM	BHP	RPM	BHP	RPM	BHP	RPM	BHP	RPM	BHP
2048	1600	818	0.81	—	—	—	—	—	—	—	—	—	—	—	—
2176	1700	823	0.88	882	1.00	—	—	—	—	—	—	—	—	—	—
2304	1800	830	0.96	886	1.08	943	1.21	—	—	—	—	—	—	—	—
2432	1900	840	1.04	893	1.17	946	1.30	—	—	—	—	—	—	—	—
2560	2000	851	1.13	902	1.26	952	1.39	1054	1.68	—	—	—	—	—	—
2816	2200	879	1.34	925	1.47	970	1.61	1062	1.90	1155	2.22	—	—	—	—
3072	2400	910	1.59	953	1.73	995	1.87	1079	2.16	1163	2.49	1248	2.83	—	—
3328	2600	945	1.87	985	2.02	1024	2.16	1101	2.47	1179	2.80	1257	3.14	1335	3.52
3584	2800	982	2.20	1019	2.35	1056	2.50	1128	2.82	1201	3.15	1273	3.51	1345	3.88
3840	3000	1021	2.56	1056	2.72	1091	2.88	1159	3.21	1227	3.56	1294	3.92	1361	4.30
4096	3200	1062	2.98	1095	3.14	1128	3.31	1193	3.65	1256	4.01	1319	4.38	1382	4.77
4352	3400	1103	3.43	1135	3.61	1167	3.78	1228	4.14	1288	4.51	1348	4.90	—	—
4608	3600	1145	3.94	1176	4.13	1207	4.31	1265	4.69	1323	5.07	1380	5.47	—	—
4864	3800	1188	4.50	1218	4.70	1247	4.89	1304	5.29	1359	5.68	—	—	—	—
5120	4000	1232	5.12	1261	5.32	1289	5.53	1344	5.94	1397	6.35	—	—	—	—
5376	4200	1275	5.79	1304	6.00	1332	6.22	1385	6.65	—	—	—	—	—	—
5632	4400	1320	6.52	1348	6.75	1374	6.97	—	—	—	—	—	—	—	—
5888	4600	1364	7.31	1392	7.56	—	—	—	—	—	—	—	—	—	—



Performance FCB-16

VOL. CFM	OUTLET VEL.FPM	.25 S.P.		.375 S.P.		.5 S.P.		.625 S.P.		.75 S.P.		.875 S.P.		1.0 S.P.		1.25 S.P.	
		RPM	BHP	RPM	BHP	RPM	BHP	RPM	BHP	RPM	BHP	RPM	BHP	RPM	BHP	RPM	BHP
1248	800	328	0.10	388	0.13	—	—	—	—	—	—	—	—	—	—	—	—
1404	900	340	0.12	394	0.15	448	0.19	—	—	—	—	—	—	—	—	—	—
1560	1000	355	0.15	403	0.18	452	0.22	500	0.27	—	—	—	—	—	—	—	—
1716	1100	371	0.18	416	0.22	460	0.26	504	0.30	548	0.35	—	—	—	—	—	—
1872	1200	389	0.21	430	0.26	471	0.30	511	0.35	552	0.40	592	0.45	—	—	—	—
2028	1300	408	0.26	447	0.30	484	0.35	522	0.40	559	0.45	596	0.50	634	0.56	—	—
2184	1400	427	0.31	464	0.35	499	0.40	534	0.45	569	0.51	603	0.56	638	0.62	708	0.74
2340	1500	447	0.36	482	0.41	515	0.46	548	0.52	581	0.57	613	0.63	645	0.69	710	0.82
2496	1600	467	0.42	501	0.48	533	0.53	564	0.59	594	0.65	625	0.71	655	0.77	716	0.90
2652	1700	488	0.49	520	0.55	551	0.61	580	0.67	609	0.73	638	0.79	666	0.85	724	0.99
2808	1800	509	0.57	540	0.63	569	0.69	597	0.75	625	0.82	652	0.88	679	0.95	733	1.09
2964	1900	530	0.66	560	0.72	588	0.78	615	0.85	642	0.92	668	0.98	694	1.05	745	1.19
3120	2000	551	0.75	581	0.82	608	0.89	634	0.95	659	1.02	684	1.09	709	1.16	758	1.31
3432	2200	594	0.96	622	1.04	648	1.12	672	1.19	696	1.27	719	1.34	742	1.42	787	1.57
3744	2400	637	1.22	664	1.31	689	1.39	712	1.47	735	1.55	756	1.63	778	1.71	820	1.88
4056	2600	681	1.52	707	1.61	731	1.70	753	1.79	774	1.88	795	1.97	815	2.06	855	2.23
4368	2800	725	1.86	750	1.97	773	2.06	795	2.16	815	2.25	835	2.35	854	2.44	891	2.63
4680	3000	769	2.26	794	2.37	816	2.48	837	2.58	856	2.68	875	2.79	894	2.89	929	3.09
4992	3200	814	2.71	838	2.83	859	2.94	879	3.06	898	3.17	917	3.28	934	3.38	969	3.60
5304	3400	859	3.21	882	3.34	903	3.47	922	3.59	941	3.71	958	3.82	976	3.94	1009	4.17
5616	3600	903	3.78	926	3.92	946	4.05	965	4.18	983	4.31	1001	4.44	1017	4.56	1049	4.80
5928	3800	948	4.41	970	4.56	990	4.70	1009	4.84	1026	4.98	1043	5.11	1059	5.24	1090	5.50
6240	4000	993	5.10	1015	5.27	1034	5.42	1053	5.57	1070	5.71	1086	5.86	1102	5.99	1132	6.27
6552	4200	1038	5.87	1059	6.04	1079	6.21	1097	6.37	1113	6.52	1129	6.67	1145	6.82	1174	7.11
6864	4400	1084	6.71	1104	6.90	1123	7.07	1141	7.24	1157	7.40	1173	7.56	1188	7.72	1217	8.03
7176	4600	1129	7.63	1149	7.83	1168	8.02	1185	8.19	1201	8.37	1216	8.53	1231	8.70	1259	9.02
7488	4800	1174	8.63	1194	8.84	1212	9.04	1229	9.23	1245	9.41	1260	9.59	1275	9.76	1302	10.10
7800	5000	1220	9.72	1239	9.94	1257	10.15	1274	10.35	1289	10.54	1304	10.72	—	—	—	—
8112	5200	1265	10.90	1284	11.13	1302	11.35	—	—	—	—	—	—	—	—	—	—
8424	5400	1311	12.16	—	—	—	—	—	—	—	—	—	—	—	—	—	—

VOL. CFM	OUTLET VEL FPM	1.5 S.P.		1.75 S.P.		2.0 S.P.		2.5 S.P.		3.0 S.P.		3.5 S.P.		4.0 S.P.	
		RPM	BHP	RPM	BHP	RPM	BHP	RPM	BHP	RPM	BHP	RPM	BHP	RPM	BHP
2496	1600	776	1.03	—	—	—	—	—	—	—	—	—	—	—	—
2652	1700	781	1.13	838	1.27	—	—	—	—	—	—	—	—	—	—
2808	1800	787	1.23	841	1.38	895	1.54	—	—	—	—	—	—	—	—
2964	1900	796	1.34	847	1.50	898	1.66	—	—	—	—	—	—	—	—
3120	2000	807	1.46	855	1.62	904	1.78	1001	2.13	—	—	—	—	—	—
3432	2200	832	1.74	876	1.90	920	2.07	1008	2.43	1097	2.81	—	—	—	—
3744	2400	861	2.05	901	2.23	942	2.41	1023	2.79	1104	3.18	1185	3.59	—	—
4056	2600	893	2.42	931	2.60	968	2.79	1043	3.19	1118	3.60	1193	4.03	1268	4.47
4368	2800	927	2.83	963	3.02	998	3.23	1068	3.64	1137	4.07	1207	4.51	1276	4.97
4680	3000	964	3.29	998	3.50	1031	3.71	1096	4.14	1161	4.59	1226	5.05	1291	5.53
4992	3200	1001	3.82	1034	4.04	1065	4.26	1127	4.71	1188	5.18	1249	5.65	1310	6.15
5304	3400	1040	4.40	1071	4.63	1101	4.87	1160	5.34	1218	5.82	1276	6.32	—	—
5616	3600	1080	5.05	1109	5.29	1138	5.54	1195	6.03	1250	6.54	1305	7.06	—	—
5928	3800	1120	5.76	1149	6.02	1177	6.28	1231	6.80	1284	7.32	—	—	—	—
6240	4000	1161	6.54	1189	6.81	1216	7.08	1268	7.63	—	—	—	—	—	—
6552	4200	1202	7.40	1229	7.68	1255	7.97	1306	8.54	—	—	—	—	—	—
6864	4400	1244	8.33	1270	8.63	1296	8.93	—	—	—	—	—	—	—	—
7176	4600	1286	9.34	1312	9.66	—	—	—	—	—	—	—	—	—	—



Performance FCB-18

VOL. CFM	OUTLET VEL. FPM	.25 S.P.		.375 S.P.		.5 S.P.		.625 S.P.		.75 S.P.		.875 S.P.		1.0 S.P.	
		RPM	BHP	RPM	BHP	RPM	BHP	RPM	BHP	RPM	BHP	RPM	BHP	RPM	BHP
1519	800	296	0.11	352	0.16	—	—	—	—	—	—	—	—	—	—
1709	900	306	0.14	356	0.19	406	0.24	—	—	—	—	—	—	—	—
1899	1000	318	0.17	364	0.22	409	0.27	454	0.33	—	—	—	—	—	—
2089	1100	331	0.20	374	0.25	416	0.31	457	0.37	497	0.44	—	—	—	—
2279	1200	346	0.24	386	0.29	425	0.35	463	0.42	500	0.49	537	0.56	—	—
2469	1300	361	0.29	399	0.34	435	0.40	471	0.47	506	0.54	540	0.61	575	0.69
2659	1400	377	0.34	413	0.40	447	0.46	481	0.53	513	0.60	546	0.68	578	0.76
2849	1500	394	0.40	428	0.46	460	0.53	492	0.60	523	0.67	554	0.75	584	0.83
3038	1600	411	0.46	443	0.53	475	0.60	504	0.67	534	0.75	563	0.83	591	0.91
3228	1700	428	0.54	459	0.61	489	0.68	518	0.76	546	0.84	573	0.92	601	1.00
3418	1800	445	0.62	476	0.69	505	0.77	532	0.85	559	0.93	585	1.02	611	1.10
3608	1900	463	0.71	493	0.79	520	0.87	547	0.95	573	1.04	598	1.12	623	1.21
3798	2000	481	0.81	510	0.89	537	0.98	562	1.06	587	1.15	611	1.24	635	1.33
4178	2200	517	1.03	544	1.13	570	1.22	594	1.32	617	1.41	640	1.51	662	1.60
4558	2400	553	1.30	580	1.41	604	1.51	627	1.61	649	1.72	671	1.82	691	1.92
4937	2600	590	1.61	616	1.73	639	1.84	661	1.95	682	2.06	702	2.18	722	2.29
5317	2800	627	1.97	652	2.10	675	2.22	696	2.35	716	2.46	735	2.58	754	2.70
5697	3000	665	2.38	689	2.52	711	2.66	731	2.79	750	2.92	769	3.05	787	3.17
6077	3200	702	2.85	726	3.00	747	3.15	767	3.29	786	3.43	804	3.57	821	3.70
6457	3400	740	3.37	763	3.54	784	3.70	803	3.85	821	4.00	839	4.15	855	4.29
6836	3600	778	3.95	800	4.13	820	4.31	839	4.47	857	4.63	874	4.79	890	4.94
7216	3800	816	4.60	838	4.80	857	4.98	876	5.16	893	5.33	910	5.50	926	5.66
7596	4000	854	5.32	875	5.53	895	5.73	913	5.92	930	6.10	946	6.28	961	6.46
7976	4200	892	6.11	913	6.34	932	6.55	950	6.75	966	6.95	982	7.14	997	7.32
8356	4400	931	6.98	951	7.22	970	7.44	987	7.66	1003	7.87	1019	8.07	1034	8.27
8735	4600	969	7.92	989	8.18	1007	8.42	1024	8.65	1040	8.87	1055	9.08	—	—
9115	4800	1008	8.95	1027	9.22	1045	9.48	—	—	—	—	—	—	—	—
9495	5000	1046	10.07	—	—	—	—	—	—	—	—	—	—	—	—

VOL. CFM	OUTLET VEL. FPM	1.25 S.P.		1.50 S.P.		1.75 S.P.		2.0 S.P.		2.5 S.P.		3.0 S.P.	
		RPM	BHP	RPM	BHP	RPM	BHP	RPM	BHP	RPM	BHP	RPM	BHP
2659	1400	642	0.93	—	—	—	—	—	—	—	—	—	—
2849	1500	644	1.00	—	—	—	—	—	—	—	—	—	—
3038	1600	648	1.09	704	1.28	—	—	—	—	—	—	—	—
3228	1700	654	1.18	707	1.38	760	1.58	—	—	—	—	—	—
3418	1800	662	1.29	713	1.48	763	1.69	812	1.92	—	—	—	—
3608	1900	671	1.40	720	1.60	767	1.81	814	2.04	—	—	—	—
3798	2000	682	1.52	728	1.73	773	1.94	819	2.17	908	2.66	—	—
4178	2200	705	1.81	748	2.02	790	2.24	831	2.47	914	2.97	995	3.51
4558	2400	732	2.14	772	2.36	810	2.59	849	2.83	925	3.33	1000	3.88
4937	2600	760	2.51	798	2.75	834	2.98	870	3.23	941	3.75	1011	4.31
5317	2800	791	2.94	826	3.19	860	3.44	894	3.70	961	4.24	1027	4.81
5697	3000	822	3.43	856	3.69	889	3.95	921	4.22	984	4.78	1046	5.37
6077	3200	855	3.97	887	4.25	918	4.52	949	4.81	1009	5.39	—	—
6457	3400	888	4.58	919	4.87	949	5.16	979	5.45	1036	6.06	—	—
6836	3600	922	5.25	952	5.56	981	5.86	1009	6.17	—	—	—	—
7216	3800	956	5.99	985	6.31	1013	6.64	1041	6.96	—	—	—	—
7596	4000	991	6.80	1019	7.14	1047	7.48	—	—	—	—	—	—
7976	4200	1026	7.69	1054	8.05	—	—	—	—	—	—	—	—



Performance FCB-20

VOL. CFM	OUTLET VEL. FPM	.25 S.P.		.375 S.P.		.5 S.P.		.625 S.P.		.75 S.P.		.875 S.P.		1.0 S.P.	
		RPM	BHP	RPM	BHP	RPM	BHP	RPM	BHP	RPM	BHP	RPM	BHP	RPM	BHP
1853	800	256	0.14	308	0.19	—	—	—	—	—	—	—	—	—	—
2084	900	263	0.16	309	0.22	—	—	—	—	—	—	—	—	—	—
2316	1000	272	0.20	314	0.26	356	0.33	—	—	—	—	—	—	—	—
2548	1100	282	0.24	321	0.30	360	0.37	398	0.45	—	—	—	—	—	—
2780	1200	294	0.29	330	0.35	366	0.42	401	0.50	436	0.59	—	—	—	—
3011	1300	307	0.34	341	0.41	374	0.48	406	0.56	439	0.65	471	0.74	—	—
3242	1400	320	0.40	352	0.47	383	0.55	413	0.63	444	0.72	474	0.81	503	0.91
3474	1500	333	0.47	364	0.55	393	0.63	422	0.71	450	0.80	478	0.90	506	1.00
3706	1600	347	0.55	376	0.63	404	0.71	431	0.80	458	0.89	485	0.99	511	1.09
3937	1700	362	0.64	389	0.72	416	0.81	442	0.90	467	0.99	493	1.09	518	1.19
4169	1800	376	0.74	403	0.83	428	0.92	453	1.01	477	1.10	501	1.21	525	1.31
4400	1900	391	0.85	417	0.94	441	1.03	465	1.13	488	1.23	511	1.33	534	1.44
4632	2000	406	0.97	431	1.07	455	1.16	477	1.26	500	1.37	522	1.47	543	1.58
5095	2200	437	1.25	460	1.35	482	1.46	504	1.57	524	1.67	544	1.79	564	1.90
5558	2400	468	1.57	490	1.69	511	1.80	531	1.92	550	2.04	569	2.16	588	2.28
6022	2600	499	1.96	520	2.08	540	2.21	559	2.33	578	2.46	595	2.59	613	2.71
6485	2800	531	2.40	551	2.54	570	2.67	588	2.81	606	2.94	623	3.08	639	3.21
6948	3000	563	2.90	582	3.05	601	3.20	618	3.34	634	3.49	651	3.63	667	3.78
7411	3200	595	3.48	614	3.64	631	3.80	648	3.95	664	4.11	679	4.26	695	4.41
7875	3400	628	4.13	646	4.30	663	4.47	679	4.64	694	4.80	709	4.96	723	5.13
8338	3600	660	4.85	678	5.04	694	5.22	709	5.40	724	5.57	739	5.74	753	5.92
8801	3800	693	5.66	710	5.86	726	6.05	740	6.24	755	6.43	769	6.61	782	6.79
9264	4000	726	6.55	742	6.77	757	6.97	772	7.17	786	7.37	799	7.56	812	7.76
9727	4200	759	7.54	775	7.76	789	7.98	803	8.19	817	8.40	830	8.61	843	8.81
10190	4400	792	8.62	807	8.86	822	9.09	835	9.31	848	9.53	861	9.75	873	9.96
10654	4600	825	9.80	840	10.05	854	10.30	867	10.53	880	10.76	892	10.99	904	11.22
11117	4800	859	11.09	873	11.36	886	11.61	899	11.86	912	12.10	924	12.34	936	12.58
11580	5000	892	12.49	906	12.76	919	13.03	932	13.29	944	13.55	955	13.80	—	—
12043	5200	925	14.00	939	14.29	952	14.57	—	—	—	—	—	—	—	—

VOL. CFM	OUTLET VEL. FPM	.25 S.P.		.375 S.P.		.5 S.P.		.625 S.P.		.75 S.P.		.875 S.P.		1.0 S.P.	
		RPM	BHP	RPM	BHP	RPM	BHP	RPM	BHP	RPM	BHP	RPM	BHP	RPM	BHP
3474	1500	562	1.21	—	—	—	—	—	—	—	—	—	—	—	—
3706	1600	564	1.31	—	—	—	—	—	—	—	—	—	—	—	—
3937	1700	567	1.42	616	1.66	—	—	—	—	—	—	—	—	—	—
4169	1800	572	1.54	619	1.78	665	2.04	—	—	—	—	—	—	—	—
4400	1900	579	1.67	623	1.92	667	2.18	711	2.46	—	—	—	—	—	—
4632	2000	586	1.81	629	2.06	671	2.33	712	2.61	—	—	—	—	—	—
5095	2200	604	2.14	643	2.40	681	2.67	720	2.96	796	3.58	—	—	—	—
5558	2400	624	2.53	661	2.80	696	3.08	732	3.37	802	4.00	871	4.68	—	—
6022	2600	647	2.98	681	3.26	714	3.54	747	3.85	813	4.49	877	5.18	941	5.93
6485	2800	672	3.49	703	3.78	735	4.08	766	4.39	827	5.05	887	5.75	947	6.50
6948	3000	697	4.07	727	4.37	757	4.69	786	5.01	844	5.68	901	6.40	—	—
7411	3200	724	4.72	753	5.04	781	5.37	808	5.70	863	6.39	917	7.12	—	—
7875	3400	752	5.46	779	5.79	806	6.12	832	6.47	884	7.19	935	7.94	—	—
8338	3600	780	6.26	806	6.61	832	6.97	857	7.33	906	8.07	955	8.84	—	—
8801	3800	808	7.16	834	7.52	859	7.89	883	8.27	930	9.04	—	—	—	—
9264	4000	838	8.14	862	8.52	886	8.91	909	9.30	955	10.10	—	—	—	—
9727	4200	867	9.22	891	9.62	914	10.02	937	10.43	—	—	—	—	—	—
10190	4400	897	10.39	920	10.81	943	11.23	—	—	—	—	—	—	—	—
10654	4600	928	11.67	950	12.11	—	—	—	—	—	—	—	—	—	—



Performance FCB-22

VOL. CFM	OUTLET VEL. FPM	.25 S.P.		.375 S.P.		.5 S.P.		.625 S.P.		.75 S.P.		.875 S.P.		1.0 S.P.	
		RPM	BHP	RPM	BHP	RPM	BHP	RPM	BHP	RPM	BHP	RPM	BHP	RPM	BHP
2262	800	232	0.16	—	—	—	—	—	—	—	—	—	—	—	—
2544	900	236	0.19	—	—	—	—	—	—	—	—	—	—	—	—
2827	1000	242	0.23	285	0.31	—	—	—	—	—	—	—	—	—	—
3110	1100	250	0.27	289	0.35	328	0.45	—	—	—	—	—	—	—	—
3392	1200	259	0.32	294	0.40	330	0.50	367	0.60	—	—	—	—	—	—
3675	1300	269	0.38	302	0.47	335	0.56	368	0.67	401	0.78	—	—	—	—
3958	1400	280	0.45	310	0.54	341	0.63	372	0.74	403	0.86	434	0.99	—	—
4241	1500	291	0.52	320	0.62	348	0.72	377	0.82	406	0.94	435	1.07	464	1.21
4523	1600	303	0.61	330	0.71	357	0.81	384	0.92	410	1.04	437	1.17	465	1.30
4806	1700	315	0.70	341	0.80	366	0.91	391	1.02	416	1.15	442	1.27	467	1.41
5089	1800	328	0.81	352	0.92	376	1.03	400	1.14	424	1.27	448	1.40	471	1.53
5371	1900	340	0.93	364	1.04	387	1.15	409	1.27	432	1.40	454	1.53	477	1.67
5654	2000	353	1.05	376	1.17	398	1.29	419	1.42	441	1.54	462	1.68	483	1.82
6219	2200	379	1.35	401	1.48	421	1.61	441	1.74	460	1.88	480	2.02	499	2.17
6785	2400	406	1.70	426	1.84	445	1.98	464	2.12	482	2.27	500	2.42	518	2.57
7350	2600	433	2.10	452	2.26	470	2.41	488	2.57	505	2.72	521	2.88	538	3.04
7916	2800	460	2.57	479	2.74	496	2.91	512	3.07	529	3.24	544	3.40	560	3.57
8481	3000	488	3.11	505	3.29	522	3.47	538	3.65	553	3.82	568	4.00	583	4.18
9046	3200	515	3.72	532	3.91	548	4.11	563	4.30	578	4.49	592	4.67	606	4.86
9612	3400	543	4.40	560	4.61	575	4.82	590	5.03	604	5.23	617	5.43	631	5.63
10177	3600	571	5.17	587	5.40	602	5.62	616	5.84	630	6.05	643	6.26	656	6.47
10743	3800	599	6.02	615	6.27	629	6.50	643	6.73	656	6.96	669	7.19	681	7.41
11308	4000	628	6.96	643	7.22	656	7.48	670	7.72	682	7.96	695	8.20	707	8.44
11873	4200	656	8.00	670	8.28	684	8.55	697	8.81	709	9.06	721	9.31	733	9.56
12439	4400	684	9.14	698	9.44	712	9.72	724	10.00	736	10.27	748	10.53	759	10.79
13004	4600	713	10.38	726	10.69	739	11.00	751	11.29	763	11.57	774	11.85	785	12.13
13570	4800	741	11.74	755	12.07	767	12.39	779	12.69	790	12.99	801	13.29	812	13.58
14135	5000	770	13.20	783	13.55	795	13.89	807	14.21	818	14.52	829	14.83	839	15.14
14700	5200	798	14.79	811	15.16	823	15.51	834	15.85	845	16.18	856	16.50	—	—
15266	5400	827	16.50	840	16.89	851	17.26	—	—	—	—	—	—	—	—
15831	5600	856	18.34	—	—	—	—	—	—	—	—	—	—	—	—

VOL. CFM	OUTLET VEL. FPM	1.25 S.P.		1.50 S.P.		1.75 S.P.		2.0 S.P.		2.5 S.P.		3.0 S.P.	
		RPM	BHP	RPM	BHP	RPM	BHP	RPM	BHP	RPM	BHP	RPM	BHP
4806	1700	518	1.71	—	—	—	—	—	—	—	—	—	—
5089	1800	520	1.84	—	—	—	—	—	—	—	—	—	—
5371	1900	522	1.97	568	2.30	—	—	—	—	—	—	—	—
5654	2000	526	2.12	570	2.46	613	2.82	—	—	—	—	—	—
6219	2200	538	2.48	577	2.81	617	3.17	656	3.56	—	—	—	—
6785	2400	553	2.89	589	3.23	625	3.60	661	3.99	733	4.83	—	—
7350	2600	571	3.37	603	3.72	636	4.09	669	4.48	736	5.34	803	6.28
7916	2800	590	3.92	621	4.28	651	4.66	682	5.06	743	5.92	805	6.86
8481	3000	611	4.55	640	4.92	668	5.31	697	5.72	754	6.59	811	7.53
9046	3200	634	5.25	660	5.64	687	6.04	714	6.46	767	7.35	821	8.30
9612	3400	657	6.03	682	6.44	707	6.86	732	7.29	783	8.20	833	9.17
10177	3600	680	6.90	705	7.33	729	7.76	753	8.21	800	9.14	847	10.13
10743	3800	705	7.86	728	8.31	751	8.76	774	9.23	819	10.19	—	—
11308	4000	730	8.91	752	9.38	774	9.85	796	10.34	839	11.33	—	—
11873	4200	755	10.06	777	10.55	798	11.05	819	11.55	—	—	—	—
12439	4400	781	11.31	802	11.83	822	12.35	842	12.87	—	—	—	—
13004	4600	807	12.67	827	13.22	847	13.76	—	—	—	—	—	—
13570	4800	833	14.15	853	14.72	—	—	—	—	—	—	—	—



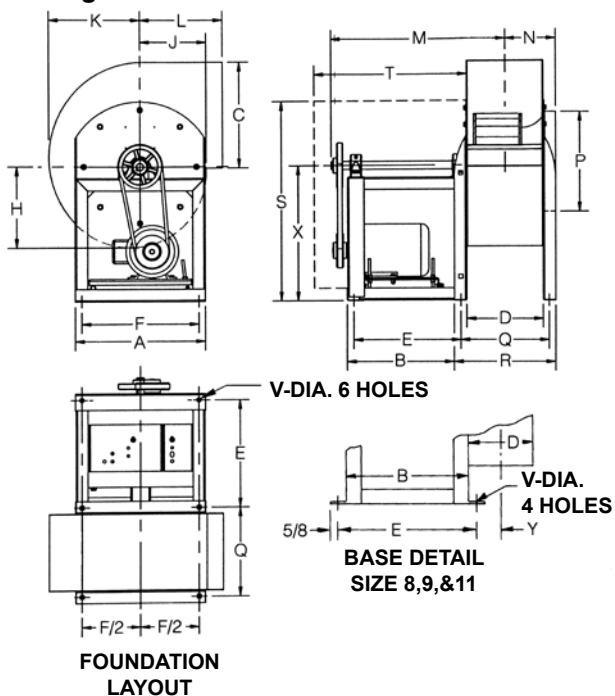
Performance FCB-24

VOL CFM.	OUTLET VEL. FPM	.25 S.P.		.375 S.P.		.5 S.P.		.625 S.P.		.75 S.P.		.875 S.P.		1.0 S.P.	
		RPM	BHP	RPM	BHP	RPM	BHP	RPM	BHP	RPM	BHP	RPM	BHP	RPM	BHP
2766	800	209	0.19	252	0.28	—	—	—	—	—	—	—	—	—	—
3112	900	214	0.23	254	0.32	—	—	—	—	—	—	—	—	—	—
3458	1000	220	0.28	257	0.37	292	0.47	—	—	—	—	—	—	—	—
3804	1100	228	0.33	262	0.43	295	0.53	326	0.64	—	—	—	—	—	—
4150	1200	236	0.39	268	0.49	299	0.60	329	0.72	357	0.84	—	—	—	—
4495	1300	245	0.47	275	0.57	304	0.68	332	0.80	360	0.93	386	1.06	—	—
4841	1400	254	0.55	283	0.66	311	0.77	337	0.89	363	1.03	388	1.16	413	1.31
5187	1500	263	0.64	291	0.75	318	0.88	343	1.00	368	1.14	392	1.28	415	1.43
5533	1600	273	0.74	300	0.86	325	0.99	350	1.12	373	1.26	396	1.41	419	1.56
5879	1700	283	0.85	309	0.98	334	1.12	357	1.25	379	1.40	401	1.55	423	1.70
6224	1800	294	0.98	319	1.12	342	1.26	365	1.40	386	1.55	407	1.70	428	1.86
6570	1900	304	1.12	329	1.27	351	1.41	373	1.56	394	1.71	414	1.87	434	2.03
6916	2000	315	1.27	339	1.43	361	1.58	382	1.74	402	1.89	422	2.06	441	2.22
7608	2200	337	1.62	359	1.79	380	1.96	400	2.13	419	2.30	437	2.47	455	2.65
8299	2400	359	2.03	381	2.22	400	2.41	419	2.59	437	2.77	455	2.96	472	3.15
8991	2600	381	2.50	402	2.72	421	2.92	439	3.12	456	3.32	473	3.52	489	3.72
9682	2800	404	3.05	424	3.28	442	3.51	460	3.72	476	3.94	492	4.15	508	4.37
10374	3000	427	3.67	446	3.93	464	4.17	481	4.41	497	4.64	512	4.87	527	5.10
11066	3200	450	4.38	469	4.66	486	4.92	502	5.18	518	5.43	532	5.68	547	5.92
11757	3400	473	5.17	491	5.48	508	5.76	524	6.04	539	6.31	553	6.57	567	6.83
12449	3600	496	6.06	514	6.39	531	6.69	546	6.99	560	7.28	574	7.56	588	7.84
13140	3800	520	7.04	537	7.39	553	7.73	568	8.04	582	8.35	596	8.66	609	8.95
13832	4000	543	8.12	560	8.51	576	8.86	590	9.20	604	9.53	617	9.86	630	10.17
14524	4200	567	9.32	583	9.73	599	10.11	613	10.47	626	10.83	639	11.17	652	11.51
15215	4400	590	10.62	607	11.06	622	11.47	636	11.86	649	12.23	661	12.60	673	12.95
15907	4600	614	12.05	630	12.52	645	12.95	658	13.36	671	13.76	684	14.15	696	14.52
16598	4800	638	13.60	654	14.09	668	14.55	681	14.99	694	15.41	706	15.82	718	16.22
17290	5000	662	15.28	677	15.80	691	16.29	704	16.75	717	17.20	729	17.63	740	18.05
17982	5200	686	17.10	701	17.65	714	18.16	727	18.65	740	19.12	751	19.58	763	20.02
18673	5400	710	19.05	724	19.63	738	20.17	751	20.69	763	21.19	774	21.67	—	—
19365	5600	734	21.15	748	21.76	761	22.33	774	22.88	—	—	—	—	—	—
20056	5800	758	23.40	772	24.04	—	—	—	—	—	—	—	—	—	—

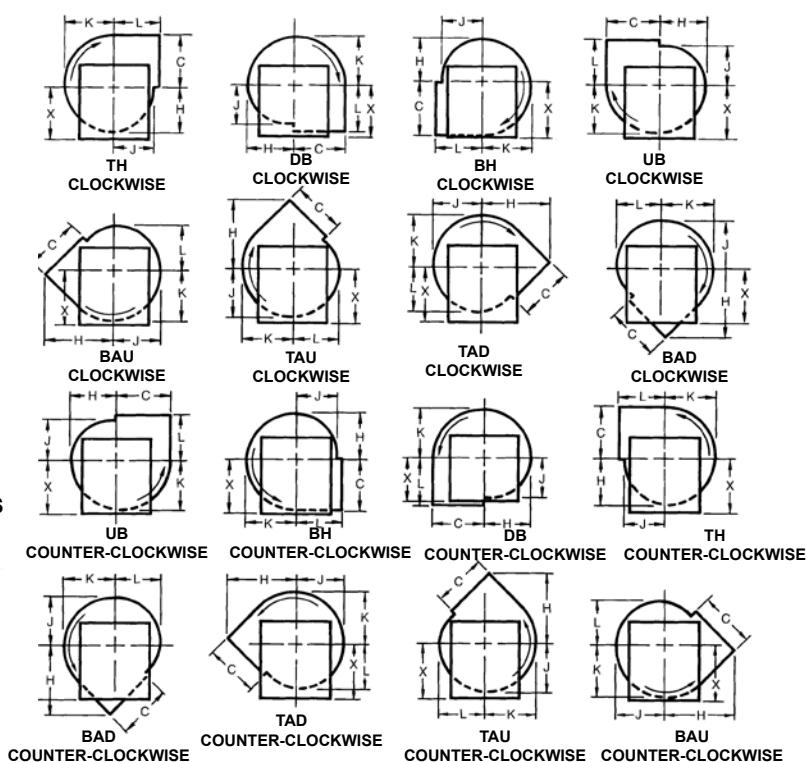
VOL CFM.	OUTLET VEL. FPM	1.25 S.P.		1.50 S.P.		1.75 S.P.		2.0 S.P.		2.5 S.P.		3.0 S.P.		3.5 S.P.	
		RPM	BHP	RPM	BHP	RPM	BHP	RPM	BHP	RPM	BHP	RPM	BHP	RPM	BHP
5187	1500	461	1.75	—	—	—	—	—	—	—	—	—	—	—	—
5533	1600	462	1.88	505	2.23	—	—	—	—	—	—	—	—	—	—
5879	1700	465	2.03	506	2.39	—	—	—	—	—	—	—	—	—	—
6224	1800	468	2.19	507	2.55	546	2.94	—	—	—	—	—	—	—	—
6570	1900	473	2.38	510	2.74	547	3.13	583	3.54	—	—	—	—	—	—
6916	2000	478	2.57	514	2.94	550	3.34	584	3.75	—	—	—	—	—	—
7608	2200	490	3.02	524	3.41	557	3.81	590	4.24	653	5.15	—	—	—	—
8299	2400	505	3.54	536	3.94	567	4.36	598	4.80	657	5.73	715	6.73	—	—
8991	2600	520	4.13	550	4.55	580	4.99	609	5.44	665	6.40	719	7.42	772	8.50
9682	2800	537	4.80	566	5.25	594	5.71	621	6.18	674	7.16	726	8.21	776	9.32
10374	3000	555	5.56	583	6.03	609	6.51	635	7.00	686	8.02	735	9.09	—	—
11066	3200	574	6.41	600	6.91	626	7.41	651	7.92	699	8.98	746	10.08	—	—
11757	3400	593	7.35	619	7.88	644	8.40	667	8.94	714	10.03	759	11.18	—	—
12449	3600	613	8.40	638	8.95	662	9.50	685	10.06	730	11.20	773	12.38	—	—
13140	3800	634	9.54	658	10.12	681	10.71	703	11.29	746	12.48	—	—	—	—
13832	4000	654	10.80	678	11.41	700	12.02	722	12.64	763	13.88	—	—	—	—
14524	4200	675	12.17	698	12.81	720	13.46	741	14.10	—	—	—	—	—	—
15215	4400	697	13.65	719	14.34	740	15.01	761	15.69	—	—	—	—	—	—
15907	4600	718	15.26	740	15.98	761	16.70	—	—	—	—	—	—	—	—
16598	4800	740	17.00	761	17.76	—	—	—	—	—	—	—	—	—	—
17290	5000	762	18.87	—	—	—	—	—	—	—	—	—	—	—	—



Arrangement #10



All Positions Viewed From Drive Side



SIZE	WHEEL DIA.	SHAFT DIA.	A	B	C*	D	E	F	TH, DB, BH, UB STRAIGHT DISCHARGE				BAU, TAU, TAD, BAD ANGULAR DISCHARGE			
									H	J	K	L	H	J	K	L
8	7 3/4	3/4	9 1/8	13	8 1/4	5 3/8	14 1/4	7 1/2	6	4 5/8	6 3/4	6 7/8	10 3/8	6 1/4	7 3/8	5 1/4
9	9	3/4	10 3/8	13	10 3/4	6 1/2	14 1/4	8 3/8	6 3/4	5 5/8	7 3/4	7 1/8	11 5/8	7 1/2	8 1/4	6 1/8
11	10 1/2	3/4	12 7/8	13	11 3/4	8	14 1/4	10 3/4	7 7/8	6 3/4	9 1/8	8 1/16	13 1/4	8 7/8	9 5/8	7 1/8
12	12 1/4	1	16 3/8	13 1/2	13 1/4	9 5/8	13 1/2	14 3/4	10 1/8	8 1/2	11 1/2	10 1/2	16 5/8	10 3/4	12 1/2	9 1/8
13	13 1/2	1	17 5/8	13 1/2	14 5/8	10 3/4	13 1/2	16	11 1/8	9 3/8	12 5/8	11 3/8	18 1/4	11 7/8	13 3/4	10
15	15	1	19 1/4	15 1/2	16 1/4	11 3/4	15 1/2	17 5/8	12 3/8	10 3/8	14 1/8	12 3/8	20 1/8	13 1/4	15 1/4	11 1/8
16	16 1/4	1	21 3/8	15	17 3/4	13	15 1/2	19 3/4	13 5/8	11 3/8	15 1/2	13 3/8	21 7/8	14 5/8	16 3/4	12 1/4
18	18 1/4	1 3/16	23 1/8	17	19 5/8	14 1/4	17 1/2	21 1/2	15	12 5/8	17 1/8	14 5/8	24 1/8	16	18 1/2	13 5/8
20	20	1 3/16	25	17	21 1/2	15 7/8	17	23 3/8	16 1/2	13 3/4	18 3/4	15 3/4	26 3/8	17 5/8	20 3/8	14 7/8
22	22 1/4	1 3/16	27 3/8	16 1/2	24	17 3/8	17	25 3/4	18 1/4	15 1/4	20 7/8	17 1/4	29	19 1/2	22 5/8	16 1/2
24	24 1/2	1 3/16	30 1/4	16 1/2	26 1/4	19 1/4	16 3/4	25 5/8	20 1/8	16 7/8	23	19 7/8	32 1/2	21 1/2	24 7/8	18 1/4

SIZE	M	N	P	Q	R	S	T	V	X	Y	MAX MOTOR FRAME
8	20 1/8	3 3/4	8	—	—	18	18 1/2	7/16	12	2 3/16	145T
9	20 3/4	4 5/16	9	—	—	18	18 1/2	7/16	12	2 3/4	145T
11	21 1/2	5 1/8	10	—	—	20 1/2	18 1/2	1/2	14	3 1/2	145T
12	23 7/8	6 3/8	13 1/4	11 1/4	12 3/4	25 1/4	20	1/2	17	—	182T
13	24 3/8	7	14 1/2	12 3/8	13 7/8	25 7/8	20	1/2	17	—	182T
15	26 7/8	7 1/2	16 1/8	13 3/8	14 7/8	27 5/8	22	1/2	17 7/8	—	182T
16	27 1/2	8 1/2	14 7/8	14 1/2	17	30 1/8	22	1/2	19 1/2	—	184T
18	30 5/8	9 1/8	19 5/8	15 3/4	18 1/4	33 3/8	25	1/2	21 7/8	—	184T
20	31 1/2	10	21 1/2	17 7/8	20 1/8	36 1/4	25	1/2	23 3/4	—	213T
22	32 3/4	10 5/8	23 7/8	19 3/8	22 5/8	39 3/4	26	1/2	16 1/8	—	213T
24	33 5/8	11 3/4	26 3/8	21 1/4	24 1/4	42 7/8	26	1/2	27 3/4	—	215T

NOTE: Letters "C" and "D" are outside housing dimensions. "C" dimension extends beyond center-line, size #8 (5/16), size #9 (19/16) & size #11 (11/16)

